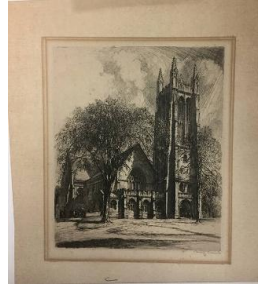


Basic Report



Primary Maker: Louis Orr
Nationality: American
Chapin Hall
Date: ca. 1918
Credit Line: Anonymous gift
Medium: etching on paper mounted to paper board
Dimensions: sheet: 9 15/16 x 11 13/16 in. (25.2 x 30 cm)
Classification: WCMA Reserve Collection
Object number: RC.84.1



Primary Maker: Louis Orr
Nationality: American
Thompson Chapel
Date: ca. 1918
Credit Line: Anonymous gift
Medium: etching on paper
Dimensions: sheet: 12 1/8 x 11 in. (30.8 x 27.9 cm)
Classification: WCMA Reserve Collection
Object number: RC.84.2



Primary Maker: Louis Orr
Nationality: American
Griffin Hall
Date: ca. 1918
Credit Line: Anonymous gift
Medium: etching on paper mounted to paper board
Dimensions: sheet: 11 7/8 x 10 1/4 in. (30.2 x 26 cm)
Classification: WCMA Reserve Collection
Object number: RC.84.3



Primary Maker: Louis Orr
Nationality: American
West College from the North
Date: ca. 1918
Credit Line: Anonymous gift
Medium: etching on paper
Dimensions: sheet: 12 3/8 x 10 7/8 in. (31.4 x 27.6 cm)
Classification: WCMA Reserve Collection
Object number: RC.84.4



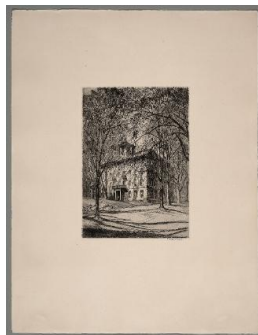
Primary Maker: Louis Orr
Nationality: American
Title page (From "Six Etchings of Williamstown")
Date: 1925
Credit Line: Gift of the Class of 1896
Medium: etching
Dimensions: sheet: 19 13/16 x 15 1/4 in. (50.3 x 38.7 cm) image: 8 1/4 x 4 15/16 in. (21 x 12.5 cm)
Classification: PRINTS
Object number: 26.1.A



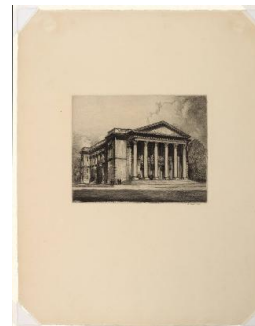
Primary Maker: Louis Orr
Nationality: American
Stetson Library (from "Six Etchings of Williamstown")
Date: 1926
Credit Line: Gift of the Class of 1896
Medium: etching
Dimensions: sheet: 19 13/16 x 15 1/4 in. (50.3 x 38.8 cm) image: 8 7/8 x 6 1/4 in. (22.5 x 15.8 cm)
Classification: PRINTS
Object number: 26.1.C



Primary Maker: Louis Orr
Nationality: American
Thompson Memorial Chapel (from "Six Etchings of Williamstown")
Date: 1926
Credit Line: Gift of the Class of 1896
Medium: etching
Dimensions: sheet: 19 13/16 x 15 3/8 in. (50.3 x 39 cm) image: 9 x 5 5/8 in. (22.8 x 14.3 cm)
Classification: PRINTS
Object number: 26.1.F



Primary Maker: Louis Orr
Nationality: American
West College (from "Six Etchings of Williamstown")
Date: 1926
Credit Line: Gift of the Class of 1896
Medium: etching
Dimensions: sheet: 20 1/16 x 15 1/4 in. (50.9 x 38.8 cm) image: 9 3/8 x 6 5/8 in. (23.8 x 16.9 cm)
Classification: PRINTS
Object number: 26.1.E



Primary Maker: Louis Orr
Nationality: American
Chapin Hall (from "Six Etchings of Williamstown")
Date: 1926
Credit Line: Gift of the Class of 1896
Medium: etching on paper
Dimensions: plate: 6 7/8 x 8 7/16 in. (17.5 x 21.4 cm) frame: 22 15/16 x 17 in. (58.2 x 43.2 cm)
Classification: PRINTS
Object number: 26.1.D



Primary Maker: Louis Orr
Nationality: American
Grace Chapin Hall from the West
Credit Line: Gift of Andrew Keck '24
Medium: etching
Dimensions: plate: 8 3/8 x 5 7/8 in. (21.2 x 15 cm) frame: 16 3/4 x 12 3/4 in. (42.5 x 32.4 cm)
Classification: PRINTS
Object number: 94.8.8