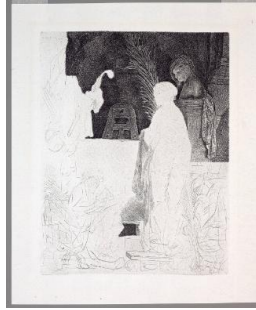


# Basic Report



**Primary Maker:** Jonas Suyderhoef  
**Nationality:** Dutch  
**Three Peasants Gathered Around a Bench in an Interior**  
**Date:** 17th Century  
**Credit Line:** Gift of George Hofmann in memory of Frederick Elliott Groehl, Class of 1931  
**Medium:** etching  
**Dimensions:** plate: 11 3/16 x 8 3/4 in. (28.4 x 22.2 cm)  
sheet: 11 3/8 x 8 13/16 in. (28.9 x 22.4 cm)  
**Classification:** PRINTS  
**Object number:** M.2005.2



**Primary Maker:** Rembrandt van Rijn  
**Nationality:** Dutch  
**The Artist Drawing From His Model**  
**Date:** ca. 1639 (18th century impression)  
**Credit Line:** Bequest of John T. Overbeck, Class of 1954  
**Medium:** unfinished etching, with drypoint and burin  
**Dimensions:** sheet: 11 3/8 x 9 3/8 in. (28.9 x 23.8 cm)  
**Classification:** PRINTS  
**Object number:** M.2015.7.5



**Primary Maker:** Rembrandt van Rijn  
**Nationality:** Dutch  
**St. Jerome in a Dark Chamber**  
**Date:** 1642  
**Credit Line:** Bequest of John T. Overbeck, Class of 1954  
**Medium:** etching, drypoint, and engraving  
**Dimensions:** frame: 14 3/4 x 15 3/4 in. (37.5 x 40 cm)  
image: 6 x 7 in. (15.2 x 17.8 cm)  
**Classification:** PRINTS  
**Object number:** M.2015.7.6



**Primary Maker:** Mark Manders  
**Nationality:** Dutch  
**Fragment from "Self Portrait as a Building"**  
**Date:** 1995  
**Credit Line:** Gift of Johanna Reinfeld Kolodny, Class of 2001  
**Medium:** mixed media, 2 chairs, 1 table with carpet and sand  
**Classification:** SCULPTURE  
**Object number:** M. 2015.24.14



**Primary Maker:** Anthonie Waterloo  
**Nationality:** Dutch  
**Trees and a Country House by a Road**  
**Date:** no date  
**Credit Line:** Gift of David P. Tunick, Class of 1966  
**Medium:** etching on paper  
**Dimensions:** Overall: 5 1/8 x 5 11/16 in. (13 x 14.4 cm)  
**Classification:** PRINTS  
**Object number:** 90.14.8



**Primary Maker:** Carel Nicholaas Storm van's-Gravesande  
**Nationality:** Dutch  
**Fishing Boats Returning to Harbor**  
**Date:** no date  
**Credit Line:** Bequest of John H. Maghee  
**Medium:** etching on paper  
**Dimensions:** sheet: 6 13/16 x 9 7/16 in. (17.3 x 23.9 cm)  
plate: 2 1/16 x 5 1/2 in. (5.3 x 14 cm)  
**Classification:** PRINTS  
**Object number:** 37.2.157



**Primary Maker:** Jan Pietersz. Saenredam  
**Nationality:** Dutch  
 Ahiah Proclaiming that Dogs and Birds will Eat the Dead Bodies  
**Date:** late 16th century  
**Credit Line:** Gift of David P. Tunick, Class of 1966  
**Medium:** engraving on paper  
**Dimensions:** Overall: 10 1/2 x 7 5/8 in. (26.7 x 19.3 cm)  
**Classification:** PRINTS  
**Object number:** 87.14.39



**Primary Maker:** Claes Jansz. Visscher the Younger  
**Nationality:** Dutch  
 Two Peasants with Cows, Sheep, and Dog Drinking  
**Date:** no date  
**Credit Line:** Gift of David P. Tunick, Class of 1966  
**Medium:** etching on paper  
**Dimensions:** Overall: 11 7/8 x 15 1/2 in. (30.2 x 39.3 cm)  
**Classification:** PRINTS  
**Object number:** 87.14.40



**Primary Maker:** Jacob Matham  
**Nationality:** Dutch  
 The Prodigal Son (Plate 2)  
**Date:** 1592  
**Credit Line:** Gift of David P. Tunick, Class of 1966  
**Medium:** engraving on paper  
**Dimensions:** Overall: 9 3/16 x 6 3/4 in. (23.4 x 17.2 cm)  
**Classification:** PRINTS  
**Object number:** 87.14.32



**Primary Maker:** Jan Pietersz. Saenredam  
**Nationality:** Dutch  
 Winter (from "The Seasons")  
**Date:** ca. 1597  
**Credit Line:** Gift of David P. Tunick, Class of 1966  
**Medium:** engraving on paper  
**Dimensions:** Overall: 8 7/8 x 6 1/2 in. (22.5 x 16.5 cm)  
**Classification:** PRINTS  
**Object number:** 84.31.12