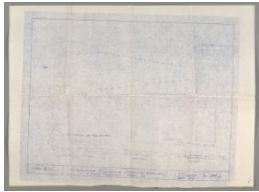


Basic Report



Primary Maker: Tim Cunard

Nationality: American
Blueprint for "Solicitor
(Collector-Conductor-
Receiver)"

Date: 1982

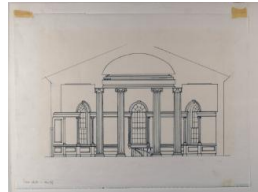
Credit Line: Museum
purchase, J. W. Field Fund

Medium: blueprint for
installation piece

Dimensions: sheet: 20 x 27
1/4 in. (50.8 x 69.2 cm)

Classification: PRINTS

Object number: 82.9



Primary Maker: Tim Cunard

Nationality: American
Interior of Rotunda,
Lawrence Hall (Preparatory
drawing for the cover of
"Handbook of the
Collection")

Date: c. 1978

Credit Line: Anonymous gift

Medium: ink on tracing
paper

Dimensions: Overall: 14 13
/16 x 17 1/8 in. (37.7 x
43.5 cm)

Classification: WCMA
Reserve Collection

Object number: RC.15.16.B



Primary Maker: Tim Cunard

Nationality: American
Interior of Rotunda,
Lawrence Hall (Preparatory
drawing for the cover of
"Handbook of the
Collection")

Date: c. 1978

Credit Line: Anonymous gift

Medium: pencil on tracing
paper

Dimensions: Overall: 14 13
/16 x 17 1/8 in. (37.7 x
43.5 cm)

Classification: WCMA
Reserve Collection

Object number: RC.15.16.A