

Basic Report



Primary Maker: Baule
Cultural Group
Nationality: Côte d'Ivoire,
West Africa
Heddle Pulley
Date: early 20th century
Credit Line: Gift of Drs.
Carolyn and Eli Newberger
Medium: wood
Dimensions: 8 × 2 1/2 in.
(20.3 × 6.4 cm)
Classification: WCMA
Reserve Collection
Object number: RC.83.23



Primary Maker: Baule
Cultural Group
Nationality: Côte d'Ivoire,
West Africa
**Double-headed feline
heddle pulley (might be
considered Janus-faced)**
Date: late 19th century
Credit Line: Gift of Drs.
Carolyn and Eli Newberger
Medium: wood with finish
Dimensions: 6 1/4 × 2 3/4
in. (15.9 × 7 cm)
Classification: WCMA
Reserve Collection
Object number: RC.83.30



Primary Maker: Baule
Cultural Group
Nationality: Côte d'Ivoire,
West Africa
**Colonial Man/Colon figure
/Cote D'Ivoire**
Date: early 20th century
Credit Line: Gift of Drs.
Carolyn and Eli Newberger
Medium: wood
Classification: WCMA
Reserve Collection
Object number: RC.83.96



Primary Maker: Baule
Cultural Group
Nationality: Côte d'Ivoire,
West Africa
**Colonial Man with Pith
Helmet (colon figure,
possibly also ritual object)**
Date: late 19th/early 20th
century
Credit Line: Gift of Drs.
Carolyn and Eli Newberger
Medium: wood, paint
(possibly acrylic) along
with white clay pigment
(kaolin), charcoal, indigo
dye, and glass
Dimensions: 19 × 6 × 6 in.
(48.3 × 15.2 × 15.2 cm)
Classification: WCMA
Reserve Collection
Object number: RC.83.247



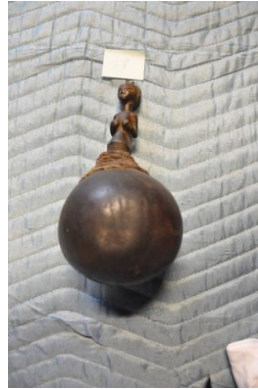
Primary Maker: Baule
Cultural Group
Nationality: Côte d'Ivoire,
West Africa
Heddle Pulley
Date: early 20th century
Credit Line: Gift of Drs.
Carolyn and Eli Newberger
Medium: wood and string
Dimensions: 7 × 2 in. (17.8
× 5.1 cm)
Classification: WCMA
Reserve Collection
Object number: RC.83.249



Primary Maker: Baule
Cultural Group
Nationality: Côte d'Ivoire,
West Africa
**Female Fertility/Maternity
Shrine Figure (possibly)**
Date: mid 20th century
Credit Line: Gift of Drs.
Carolyn and Eli Newberger
Medium: wood with white
clay (kaolin)
Dimensions: 8 × 3 in. (20.3
× 7.6 cm)
Classification: WCMA
Reserve Collection
Object number: RC.83.144.
A



Primary Maker: Baule
Cultural Group
Nationality: Côte d'Ivoire,
West Africa
Colon Figure (colonial
figure) (possibly)
Date: early 20th century
Credit Line: Gift of Drs.
Carolyn and Eli Newberger
Medium: wood with spots
of red pigment
Dimensions: 16 × 5 in.
(40.6 × 12.7 cm)
Classification: WCMA
Reserve Collection
Object number: RC.83.145



Primary Maker: Baule
Cultural Group
Nationality: Côte d'Ivoire,
West Africa
Shrine figure or Reliquary
or Milk Container
Date: early 20th century
Credit Line: Gift of Drs.
Carolyn and Eli Newberger
Medium: gourd, wood, and
binding material
Dimensions: 9 × 5 in. (22.9
× 12.7 cm)
Classification: WCMA
Reserve Collection
Object number: RC.83.157



Primary Maker: Baule
Cultural Group
Nationality: Côte d'Ivoire,
West Africa
Female figure
Date: early 20th century
Credit Line: Gift of Drs.
Carolyn and Eli Newberger
Medium: wood with black
patina
Dimensions: 9 1/2 × 2 1/2
in. (24.1 × 6.4 cm)
Classification: WCMA
Reserve Collection
Object number: RC.83.161



Primary Maker: Baule
Cultural Group
Nationality: Côte d'Ivoire,
West Africa
Maternity Figure (possibly
a spirit spouse or blole bla)
Date: early 20th century
Credit Line: Gift of Drs.
Carolyn and Eli Newberger
Medium: wood, beads, red
and black pigment/patina
Dimensions: 12 1/2 in.
(31.8 cm)
Classification: AFRICAN
Object number: M.
2017.17.32