

Basic Report



Primary Maker: Yoruba Cultural Group
Nationality: Nigeria, West Africa
Adenla (crown)
Date: 20th Century
Credit Line: Gift of Dr. Oliver E. and Pamela F. Cobb, Class of 1952
Medium: fiber, beads, cloth, basketry
Dimensions: 15 1/4 in. (38.7 cm) x 8 in. diameter 42 1/4 in. including tassels
Classification: AFRICAN
Object number: M. 2012.10.3



Primary Maker: Yoruba Cultural Group
Nationality: Nigeria, West Africa
Gelede mask
Date: early 20th century
Credit Line: Gift of Drs. Carolyn and Eli Newberger
Medium: wood with some dark pigmentation on hat and face
Dimensions: 11 x 6 1/2 x 6 in. (27.9 x 16.5 x 15.2 cm)
Classification: WCMA Reserve Collection
Object number: RC.83.8



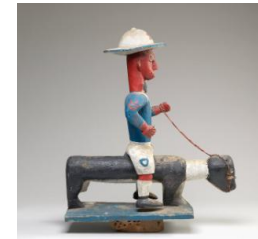
Primary Maker: Yoruba Cultural Group
Nationality: Nigeria, West Africa
Ritual cup with female figure
Date: early 20th century
Credit Line: Gift of Drs. Carolyn and Eli Newberger
Medium: wood, white clay (kaolin), libation patina
Classification: WCMA Reserve Collection
Object number: RC.83.24



Primary Maker: Yoruba Cultural Group
Nationality: Nigeria, West Africa
Basket with female head stopper
Date: early 20th century
Credit Line: Gift of Drs. Carolyn and Eli Newberger
Medium: wood, dyed woven fiber
Dimensions: stopper: 4 3/4 high x 3 1/2 in. diam. (12.1 x 8.9 cm) container: 7 high x 7 1/2 in. diam. (17.8 x 19.1 cm)
Classification: AFRICAN
Object number: M. 2017.17.8



Primary Maker: Yoruba Cultural Group
Nationality: Nigeria, West Africa
Female Colonial Figure (Colon Figure)
Date: early 20th century
Credit Line: Gift of Drs. Carolyn and Eli Newberger
Medium: wood with pigment
Dimensions: 38 1/2 x 12 1/2 in. (97.8 x 31.8 cm)
Classification: WCMA Reserve Collection
Object number: RC.83.141



Primary Maker: Yoruba Cultural Group
Nationality: Nigeria, West Africa
Mounted Policeman Headdress (colon figure)
Date: early 20th century
Credit Line: Gift of Drs. Carolyn and Eli Newberger
Medium: wood, pigment, string, iron nails
Dimensions: 20 x 20 in. (50.8 x 50.8 cm) (not including base)
Classification: AFRICAN
Object number: M. 2017.17.29



Primary Maker: Yoruba Cultural Group
Nationality: Nigeria, West Africa
 Colonial male figure (Colon Figure)
Date: early/mid 20th century
Credit Line: Gift of Drs. Carolyn and Eli Newberger
Medium: wood with pigment
Dimensions: 37 1/2 x 10 1/4 in. (95.3 x 26 cm)
Classification: WCMA Reserve Collection
Object number: RC.83.142



Primary Maker: Yoruba Cultural Group
Nationality: Nigeria, West Africa
 Tusk Horn (possibly)
Date: early 20th century
Credit Line: Gift of Drs. Carolyn and Eli Newberger
Medium: ivory tusk with beaded segments
Dimensions: 20 in. (50.8 cm) long
Classification: WCMA Reserve Collection
Object number: RC.83.143



Primary Maker: Yoruba Cultural Group
Nationality: Nigeria, West Africa
 Eve Ibeji Figure
Date: mid 20th century
Credit Line: Gift of Drs. Carolyn and Eli Newberger
Medium: wood, beads
Dimensions: 9 1/2 x 4 in. (24.1 x 10.2 cm)
Classification: WCMA Reserve Collection
Object number: RC.83.160



Primary Maker: Yoruba Cultural Group
Nationality: Nigeria, West Africa
 Eve Ibeji (female)
Date: early 20th century
Credit Line: Gift of Drs. Carolyn and Eli Newberger
Medium: wood and beads
Dimensions: 10 in. (25.4 cm)
Classification: WCMA Reserve Collection
Object number: RC.83.170.
 A