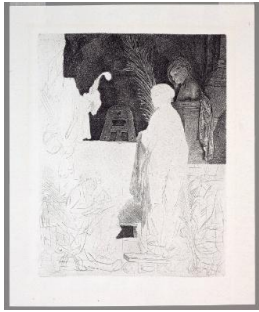


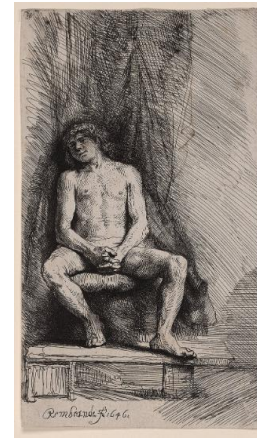
Basic Report



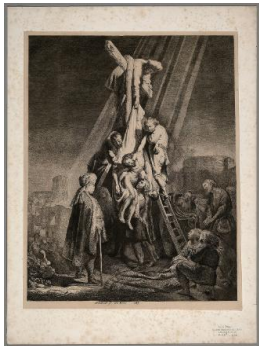
Primary Maker:
Rembrandt van Rijn
Nationality: Dutch
The Artist Drawing From His Model
Date: ca. 1639 (18th century impression)
Credit Line: Bequest of John T. Overbeck, Class of 1954
Medium: unfinished etching, with drypoint and burin
Dimensions: sheet: 11 3/8 x 9 3/8 in. (28.9 x 23.8 cm)
Classification: PRINTS
Object number: M.2015.7.5



Primary Maker:
Rembrandt van Rijn
Nationality: Dutch
St. Jerome in a Dark Chamber
Date: 1642
Credit Line: Bequest of John T. Overbeck, Class of 1954
Medium: etching, drypoint, and engraving
Dimensions: frame: 14 3/4 x 15 3/4 in. (37.5 x 40 cm)
image: 6 x 7 in. (15.2 x 17.8 cm)
Classification: PRINTS
Object number: M.2015.7.6



Primary Maker:
Rembrandt van Rijn
Nationality: Dutch
Study from the nude: Man seated before a curtain
Date: 1646
Credit Line: Museum purchase, with funds provided by the Assyrian Relief Exchange
Medium: etching on paper
Dimensions: Overall: 6 1/2 x 3 3/4 in. (16.5 x 9.5 cm)
Classification: PRINTS
Object number: 41.13.2



Primary Maker:
Rembrandt van Rijn
Nationality: Dutch
Descent from the Cross
Date: no date
Credit Line: Anonymous gift
Medium: photogravure
Dimensions: sheet: 26 x 18 7/8 in. (66 x 48 cm) image: 20 3/8 x 16 in. (51.7 x 40.7 cm)
Classification: WCMA Reserve Collection
Object number: RC.4.5



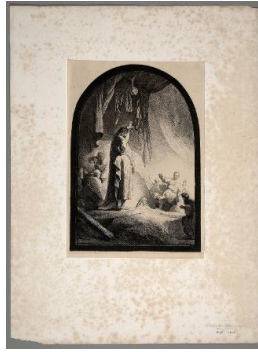
Primary Maker:
Rembrandt van Rijn
Nationality: Dutch
Christ Before Pilate
Date: no date
Credit Line: Anonymous gift
Medium: photogravure
Dimensions: sheet: 26 x 18 7/8 in. (66 x 48 cm)
Classification: WCMA Reserve Collection
Object number: RC.4.4



Primary Maker:
Rembrandt van Rijn
Nationality: Dutch
Three Heads of Women
Date: c. 1637
Credit Line: Museum purchase, with funds provided by the Assyrian Relief Exchange
Medium: etching on paper
Dimensions: Overall: 4 15/16 x 4 1/16 in. (12.6 x 10.3 cm)
Classification: PRINTS
Object number: 41.13.1



Primary Maker:
Rembrandt van Rijn
Nationality: Dutch
Man Drawing from a Cast
Date: no date
Credit Line: Bequest of
Professor John Hawley
Roberts
Medium: etching on paper
Dimensions: sheet: 4 1/16
x 2 3/4 in. (10.3 x 7 cm)
plate: 3 9/16 x 2 9/16 in. (9
x 6.5 cm)
Classification: PRINTS
Object number: 50.3



Primary Maker:
Rembrandt van Rijn
Nationality: Dutch
Raising of Lazarus
Date: no date
Credit Line: Anonymous gift
Medium: photogravure
Dimensions: sheet: 26 x 18
7/8 in. (66 x 48 cm) image:
14 5/16 x 10 in. (36.3 x
25.4 cm)
Classification: WCMA
Reserve Collection
Object number: RC.4.1



Primary Maker:
Rembrandt van Rijn
Nationality: Dutch
Man Drawing from a Cast
Date: no date
Credit Line: Anonymous gift
Medium: photo-engraving
on paper
Dimensions: sheet: 4 1/8 x
2 3/4 in. (10.4 x 7 cm)
plate: 3 9/16 x 2 9/16 in. (9
x 6.5 cm)
Classification: WCMA
Reserve Collection
Object number: RC.4.6



Primary Maker:
Rembrandt van Rijn
Nationality: Dutch
The Raising of Lazarus
Date: 1642
Credit Line: Gift of Edward
J. and Dorothea P.
Michelson
Medium: etching on paper
Dimensions: Overall: 6 x 4 1
/2 in. (15.2 x 11.4 cm)
frame: 21 1/8 x 16 1/2 x 5
/8 in. (53.7 x 41.9 x 1.6 cm)
Classification: PRINTS
Object number: 96.24