

Basic Report

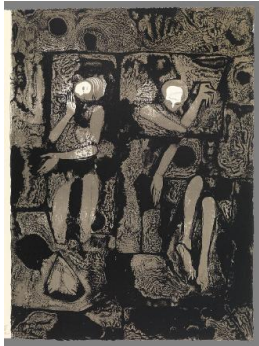


Primary Maker: June C. Wayne
Nationality: American
Meridian (from "My Palomar")
Date: 1983-1985
Credit Line: Gift of Robert Conway, Class of 1967
Medium: color lithograph on paper
Dimensions: 20 × 17 1/2 in. (50.8 × 44.5 cm) sheet: 19 × 16 1/2 in. (48.3 × 41.9 cm)
Classification: PRINTS
Object number: M.2013.4.4. A



Primary Maker: June C. Wayne
Nationality: American
Over and Out (from "My Palomar")
Date: 1983-1985
Credit Line: Gift of Robert Conway, Class of 1967
Medium: color lithograph on paper
Dimensions: 20 × 17 1/2 in. (50.8 × 44.5 cm) sheet: 19 × 16 1/2 in. (48.3 × 41.9 cm)
Classification: PRINTS
Object number: M.2013.4.4. I

Primary Maker: June C. Wayne
Nationality: American
Stellar Winds (LEAD SCREEN)
Date: 1979
Credit Line: Gift of Goldstein & Phillips, A Professional Corporation
Medium: 10 prints
Dimensions: Overall: 19 1/2 × 16 × 1 in. (49.5 × 40.6 × 2.5 cm)
Classification: PRINTS
Object number: 84.2



Primary Maker: June C. Wayne
Nationality: American
The Relique 99, 100. (from "John Donne Songs & Sonets")
Date: 1958-1959
Credit Line: Gift of Robert Conway, Class of 1967
Medium: lithograph
Dimensions: 15 1/2 × 11 1/8 × 1 1/4 in. (39.4 × 28.3 × 3.2 cm)
Classification: PRINTS
Object number: M. 2012.21.1.O



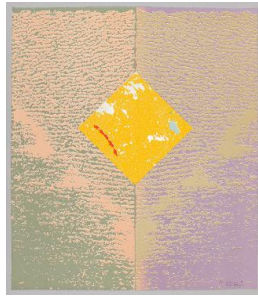
Primary Maker: June C. Wayne
Nationality: American
A Day Off (LEAD SCREEN)
Date: 1981
Credit Line: Gift of Robert Conway, Class of 1967
Medium: 6 color lithographs and 1 title page
Classification: PRINTS
Object number: M.2013.4.1



Primary Maker: June C. Wayne
Nationality: American
Stellar Winds (LEAD SCREEN)
Date: 1981
Credit Line: Gift of Robert Conway, Class of 1967
Medium: 11 prints, plus 5 additional prints
Classification: PRINTS
Object number: M.2013.4.2



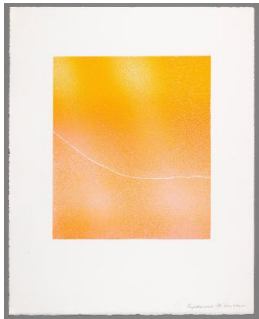
Primary Maker: June C. Wayne
Nationality: American
Artwork: Solar Flares (LEAD SCREEN)
Date: 1981-1983
Credit Line: Gift of Robert Conway, Class of 1967
Medium: 5 prints
Classification: PRINTS
Object number: M.2013.4.3



Primary Maker: June C. Wayne
Nationality: American
Artwork: My Palomar (LEAD SCREEN)
Date: 1984-1985
Credit Line: Gift of Robert Conway, Class of 1967
Medium: 9 prints
Classification: PRINTS
Object number: M.2013.4.4



Primary Maker: June C. Wayne
Nationality: American
Artwork: nos portraits en 2060 Ensor /Wayne (from "Artists' Impressions")
Date: c.1989-1991
Credit Line: Museum purchase, Kathryn Hurd Fund
Medium: color lithograph on paper
Dimensions: sheet: 12 1/16 x 12 1/16 in. (30.6 x 30.7 cm) image: 7 5/16 x 10 1/16 in. (18.5 x 25.5 cm)
Classification: PRINTS
Object number: 95.7.X



Primary Maker: June C. Wayne
Nationality: American
Artwork: Capella Wind
Date: 1978
Credit Line: Gift of Goldstein & Phillips, A Professional Corporation
Medium: color lithograph
Dimensions: sheet: 18 13/16 x 14 13/16 in. (47.8 x 37.7 cm) image: 11 3/16 x 9 5/8 in. (28.4 x 24.5 cm)
Classification: PRINTS
Object number: 84.28