

# Basic Report

---



**Primary Maker:**  
**Frederick Lane Sandback**

**Nationality:** American  
Untitled

**Date:** 1976

**Credit Line:** Museum purchase, Charles Webb Fund

**Medium:** color etching and aquatint on paper

**Dimensions:** sheet: 21 7/16 x 35 7/16 in. (54.4 x 90 cm) plate: 12 x 27 7/16 in. (30.5 x 69.7 cm)

**Classification:** PRINTS

**Object number:** 77.54



**Primary Maker:**  
**Frederick Lane Sandback**

**Nationality:** American  
Untitled

**Date:** 1971-1972

**Credit Line:** Gift of Hiram C. Butler, MA'79 in honor of George W. Ahl, III '82, for his tenure as chair of the Visiting Committee

**Medium:** color silkscreen on paper

**Dimensions:** sheet: 17 3/4 x 25 1/2 in. (45.1 x 64.8 cm)

**Classification:** PRINTS

**Object number:** M.2010.3



**Primary Maker:**  
**Frederick Lane Sandback**

**Nationality:** American  
Fred Sandback: Sculpture; co-curated by Yale University Art Gallery and Contemporary Arts Museum, Houston

**Date:** copyright 1991

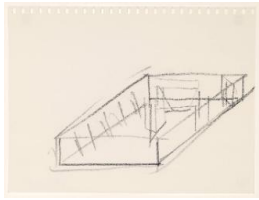
**Credit Line:** Gift of Hiram C. Butler, MA'79 in honor of George W. Ahl, III '82, for his tenure as chair of the Visiting Committee

**Medium:** exhibition catalogue

**Dimensions:** 11 1/8 x 8 1/4 in. (28.3 x 21 cm)

**Classification:** DEC ARTS

**Object number:** M.2010.4.A



**Primary Maker:**  
**Frederick Lane**  
**Sandback**

**Nationality:** American  
Untitled (conceptual sketch)

**Date:** 1989

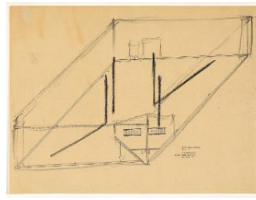
**Credit Line:** Gift of Hiram C. Butler, MA'79 in honor of George W. Ahl, III '82, for his tenure as chair of the Visiting Committee

**Medium:** conte crayon on paper

**Dimensions:** sheet: 8 5/8 x 11 3/8 in. (21.9 x 28.9 cm)  
mat: 16 1/4 x 20 1/4 in. (41.3 x 51.4 cm)

**Classification:** DRAWING

**Object number:** M.2010.4.B



**Primary Maker:**  
**Frederick Lane**  
**Sandback**

**Nationality:** American  
Untitled (conceptual sketch)

**Date:** 1989

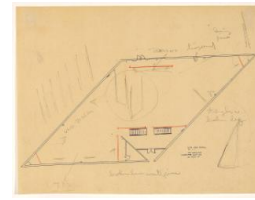
**Credit Line:** Gift of Hiram C. Butler, MA'79 in honor of George W. Ahl, III '82, for his tenure as chair of the Visiting Committee

**Medium:** crayon over print on yellow trace paper

**Dimensions:** sheet: 9 1/4 x 12 1/8 in. (23.5 x 30.8 cm)  
mat: 16 1/4 x 20 1/4 in. (41.3 x 51.4 cm)

**Classification:** DRAWING

**Object number:** M.2010.4.C



**Primary Maker:**  
**Frederick Lane**  
**Sandback**

**Nationality:** American  
Untitled (conceptual sketch)

**Date:** 1989

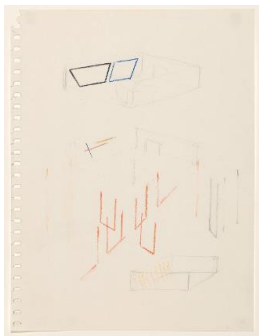
**Credit Line:** Gift of Hiram C. Butler, MA'79 in honor of George W. Ahl, III '82, for his tenure as chair of the Visiting Committee

**Medium:** pencil over print on yellow trace paper

**Dimensions:** sheet: 9 1/4 x 12 in. (23.5 x 30.5 cm)  
mat: 16 1/4 x 20 1/4 in. (41.3 x 51.4 cm)

**Classification:** DRAWING

**Object number:** M.2010.4.D



**Primary Maker:**  
**Frederick Lane**  
**Sandback**

**Nationality:** American  
Untitled (conceptual sketch)

**Date:** 1989

**Credit Line:** Gift of Hiram C. Butler, MA'79 in honor of George W. Ahl, III '82, for his tenure as chair of the Visiting Committee

**Medium:** pencil and crayon on paper

**Dimensions:** sheet: 11 3/8 x 8 5/8 in. (28.9 x 21.9 cm)  
mat: 20 1/4 x 16 1/4 in. (51.4 x 41.3 cm)

**Classification:** DRAWING

**Object number:** M.2010.4.E