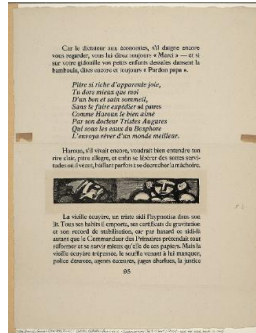


Basic Report



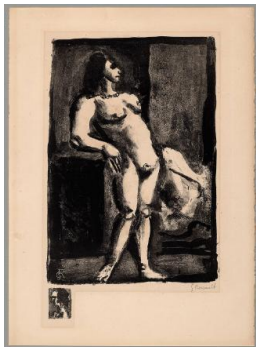
Primary Maker:
Georges Rouault
Nationality: French
Wood block for "Untitled illustration"
Date: 1931
Credit Line: Museum purchase
Medium: carved wood
Dimensions: Overall: 7 7/8 x 1 3/8 x 15/16 in. (20 x 3.5 x 2.4 cm)
Classification: PRINTS
Object number: 71.8.B



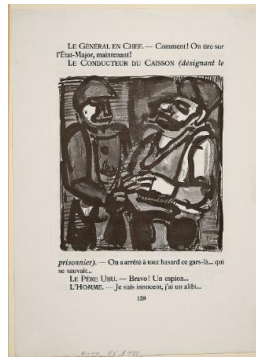
Primary Maker:
Georges Rouault
Nationality: French
Page from a book with wood block
Date: 1931
Credit Line: Museum purchase
Medium: wood engraving on paper
Dimensions: sheet: 17 7/16 x 13 5/16 in. (44.3 x 33.8 cm) image: 1 5/16 x 7 7/8 in. (3.4 x 20 cm)
Classification: PRINTS
Object number: 71.8.A



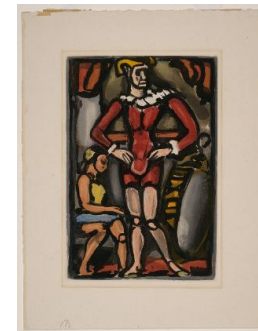
Primary Maker:
Georges Rouault
Nationality: French
Fleurs du mal
Date: 1937
Credit Line: Gift of Susan W. and Stephen D. Paine, Class of 1954
Medium: color etching and aquatint on paper
Dimensions: plate: 12 x 8 11/16 in. (30.5 x 22 cm) sheet: 17 7/16 x 13 3/8 in. (44.3 x 34 cm) frame: 31 5/16 x 25 3/16 in. (79.5 x 64 cm)
Classification: PRINTS
Object number: 75.28



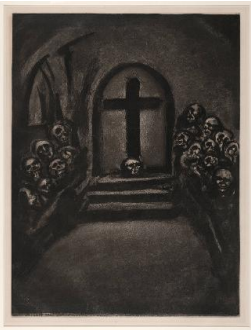
Primary Maker:
Georges Rouault
Nationality: French
The Prostitute
Date: no date
Credit Line: Gift of Alexander Stoller
Medium: lithograph on paper
Dimensions: sheet: 17 5/8 x 12 13/16 in. (44.8 x 32.5 cm) image: 14 1/2 x 8 7/8 in. (36.8 x 22.5 cm)
Classification: PRINTS
Object number: 57.23



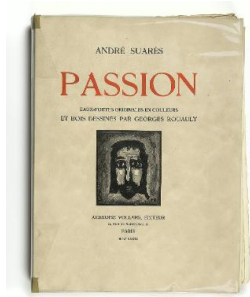
Primary Maker:
Georges Rouault
Nationality: French
Two figures (from "Ubu Roi")
Date: no date
Credit Line: Museum purchase
Medium: wood engraving on paper
Dimensions: sheet: 16 3/4 x 11 7/8 in. (42.5 x 30.2 cm) image: 8 7/16 x 7 13/16 in. (21.5 x 19.9 cm)
Classification: PRINTS
Object number: 51.5



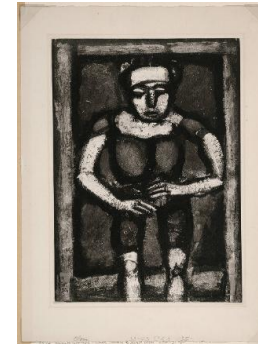
Primary Maker:
Georges Rouault
Nationality: French
Master Arthur
Date: 1934
Credit Line: Museum purchase
Medium: color etching and aquatint on paper
Dimensions: sheet: 16 13/16 x 12 13/16 in. (42.7 x 32.5 cm) image: 11 7/8 x 7 7/8 in. (30.1 x 20 cm) mat: 21 15/16 x 15 15/16 in. (55.7 x 40.5 cm)
Classification: PRINTS
Object number: 41.19



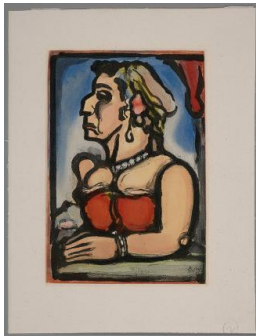
Primary Maker:
Georges Rouault
Nationality: French
 "Whoever Believes in Me..." (from the Misere Series)
Date: 1923
Credit Line: Museum purchase, Joseph O. Eaton Fund
Medium: etching and aquatint on paper
Dimensions: sheet: 25 9/16 x 19 7/8 in. (65 x 50.5 cm) plate: 22 5/8 x 17 1/8 in. (57.5 x 43.5 cm) frame: 29 x 23 1/16 in. (73.6 x 58.5 cm)
Classification: PRINTS
Object number: 71.21



Primary Maker:
Georges Rouault
Nationality: French
 Passion
Date: 1939
Credit Line: Gift of Richard W. Foster, Class of 1935
Medium: book of woodcuts and aquatints
Dimensions: Overall: 17 15/16 x 13 7/16 x 2 1/16 in. (45.5 x 34.2 x 5.2 cm)
Classification: DEC ARTS
Object number: 88.10



Primary Maker:
Georges Rouault
Nationality: French
 Clown, Standing
Date: 1926
Credit Line: Museum purchase
Medium: etching, aquatint, drypoint, and roulette on paper
Dimensions: sheet: 17 1/2 x 13 1/4 in. (44.5 x 33.6 cm) image: 13 3/4 x 10 1/16 in. (35 x 25.5 cm)
Classification: PRINTS
Object number: 55.13



Primary Maker:
Georges Rouault
Nationality: French
 Woman Facing Left (Mme. Louison)
Date: 1935
Credit Line: Museum purchase
Medium: aquatint, drypoint and mezzotint on paper
Dimensions: sheet: 16 5/8 x 12 5/8 in. (42.3 x 32 cm) plate: 12 3/16 x 8 3/8 in. (31 x 21.2 cm)
Classification: PRINTS
Object number: 52.6