

# Basic Report



**Primary Maker:** George Warren Rickey

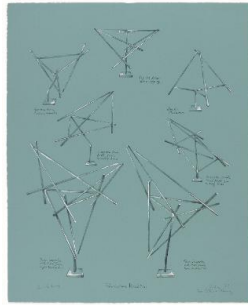
**Nationality:** American  
**Date:** 1969

**Credit Line:** Bequest of Lawrence H. Bloedel, Class of 1923

**Medium:** stainless steel and bronze on marble base

**Dimensions:** Overall: 12 x 12 5/8 in. (30.5 x 32 cm)  
Base: 1 x 2 3/8 x 2 3/8 in. (2.5 x 6 x 6 cm)

**Classification:** SCULPTURE  
**Object number:** 77.9.119



**Primary Maker:** George Warren Rickey

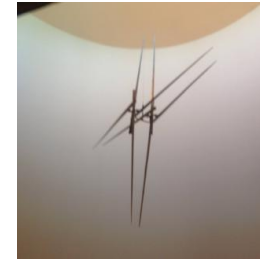
**Nationality:** American  
**Date:** 1971

**Credit Line:** Bequest of Lawrence H. Bloedel, Class of 1923

**Medium:** color lithograph on paper

**Dimensions:** sheet: 22 1/16 x 18 in. (56.1 x 45.7 cm)  
frame: 25 7/8 x 21 3/4 in. (65.8 x 55.2 cm)

**Classification:** PRINTS  
**Object number:** 77.9.129



**Primary Maker:** George Warren Rickey

**Nationality:** American  
**Date:** 1963

**Credit Line:** Bequest of Lawrence H. Bloedel, Class of 1923

**Medium:** stainless steel  
**Dimensions:** Base: 4 9/16 x 7 x 2 11/16 in. (11.6 x 17.8 x 6.8 cm) Overall: 32 1/16 in. (81.5 cm)

**Classification:** SCULPTURE  
**Object number:** 77.9.84



**Primary Maker:** George Warren Rickey

**Nationality:** American  
**Date:** 1962

**Credit Line:** Bequest of Professor Donald and Mary Richmond

**Medium:** stainless steel on wood base

**Dimensions:** Overall: 19 5/16 x 5 1/8 x 3 15/16 in. (49 x 13 x 10 cm)

**Classification:** SCULPTURE  
**Object number:** 87.22.1



**Primary Maker:** George Warren Rickey

**Nationality:** American  
**Date:** 1981

**Credit Line:** Museum purchase, Inaugural gift of the Class of 1961 Public Art Fund on the occasion of their 50th Reunion, dedicated in the belief that public art enhances the beauty of the Williams campus, accentuates learning, and stimulates creativity

**Medium:** stainless steel  
**Dimensions:** large: 30 ft (9.14 m)

**Classification:** SCULPTURE  
**Object number:** M.2011.8