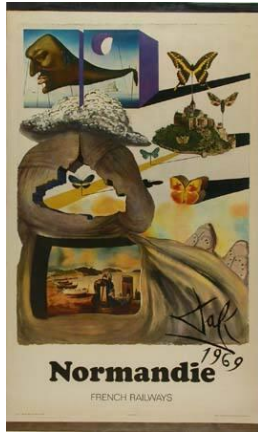
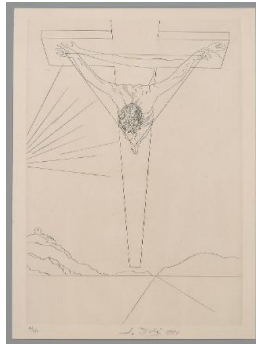


# Basic Report

---



**Primary Maker:**  
**Salvador Dalí**  
**Nationality:** Spanish  
**Normandie French Railways**  
**Date:** 1969  
**Credit Line:** Museum purchase, Karl E. Weston Memorial Fund  
**Medium:** color photo lithograph on paper  
**Dimensions:** Overall: 40 15/16 x 24 3/16 in. (104 x 61.5 cm)  
**Classification:** PRINTS  
**Object number:** 78.23



**Primary Maker:**  
**Salvador Dalí**  
**Nationality:** Spanish  
**Crucifixion**  
**Date:** 1951  
**Credit Line:** Gift of Anita Reynolds  
**Medium:** etching on paper  
**Dimensions:** sheet: 15 1/16 x 11 in. (38.3 x 28 cm)  
plate: 13 7/8 x 9 7/8 in. (35.2 x 25.1 cm)  
**Classification:** PRINTS  
**Object number:** 79.9.5



**Primary Maker:**  
**Salvador Dalí**  
**Nationality:** Spanish  
**Cavalcade Fantastique**  
**Date:** 1953  
**Credit Line:** Gift of Joseph H. King  
**Medium:** watercolor on paper mounted on board  
**Dimensions:** Overall: 20 1/2 x 30 1/8 in. (52.1 x 76.5 cm) frame: 28 3/4 x 38 3/8 x 1 3/8 in. (73 x 97.5 x 3.5 cm)  
**Classification:** DRAWING  
**Object number:** 83.13.2



**Primary Maker:**  
**Salvador Dalí**  
**Nationality:** Spanish  
**St. George and the Dragon**  
**Date:** 1947  
**Credit Line:** Gift of Milton C. Rose, Class of 1927  
**Medium:** etching on paper  
**Dimensions:** sheet: 22 3/16 x 15 1/4 in. (56.4 x 38.8 cm) image: 17 5/8 x 11 1/4 in. (44.7 x 28.6 cm) frame: 29 1/8 x 20 in. (73.9 x 50.8 cm)  
**Classification:** PRINTS  
**Object number:** 81.31.37