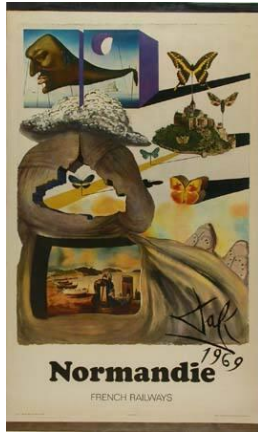


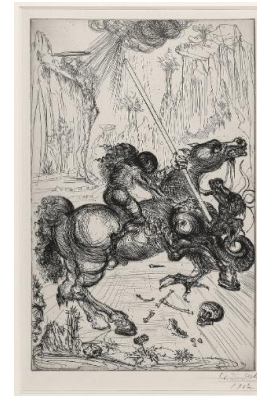
Basic Report



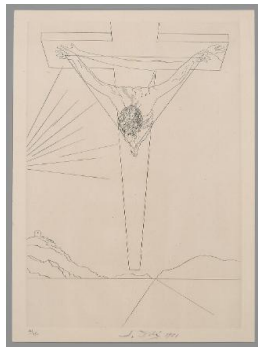
Primary Maker:
Salvador Dalí
Nationality: Spanish
Normandie French Railways
Date: 1969
Credit Line: Museum purchase, Karl E. Weston Memorial Fund
Medium: color photo lithograph on paper
Dimensions: Overall: 40 15/16 x 24 3/16 in. (104 x 61.5 cm)
Classification: PRINTS
Object number: 78.23



Primary Maker:
Salvador Dalí
Nationality: Spanish
Cavalcade Fantastique
Date: 1953
Credit Line: Gift of Joseph H. King
Medium: watercolor on paper mounted on board
Dimensions: Overall: 20 1/2 x 30 1/8 in. (52.1 x 76.5 cm) frame: 28 3/4 x 38 3/8 x 1 3/8 in. (73 x 97.5 x 3.5 cm)
Classification: DRAWING
Object number: 83.13.2



Primary Maker:
Salvador Dalí
Nationality: Spanish
St. George and the Dragon
Date: 1947
Credit Line: Gift of Milton C. Rose, Class of 1927
Medium: etching on paper
Dimensions: sheet: 22 3/16 x 15 1/4 in. (56.4 x 38.8 cm) image: 17 5/8 x 11 1/4 in. (44.7 x 28.6 cm) frame: 29 1/8 x 20 in. (73.9 x 50.8 cm)
Classification: PRINTS
Object number: 81.31.37



Primary Maker:
Salvador Dalí
Nationality: Spanish
Crucifixion
Date: 1951
Credit Line: Gift of Anita Reynolds
Medium: etching on paper
Dimensions: sheet: 15 1/16 x 11 in. (38.3 x 28 cm) plate: 13 7/8 x 9 7/8 in. (35.2 x 25.1 cm)
Classification: PRINTS
Object number: 79.9.5