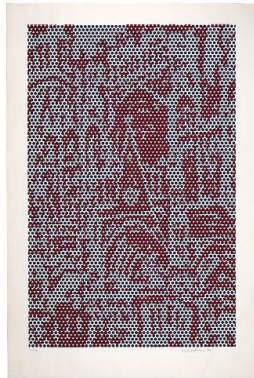


Basic Report



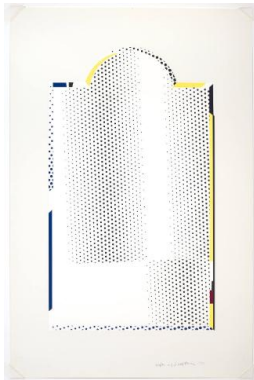
Primary Maker: Roy Lichtenstein
Nationality: American
Date: 1969
Credit Line: Museum purchase, Karl E. Weston Memorial Fund
Medium: color screenprint on paper
Dimensions: image: 41 13/16 x 26 15/16 in. (106.2 x 68.5 cm) sheet: 51 1/8 x 35 7/8 in. (129.8 x 91.1 cm)
Classification: PRINTS
Object number: 72.20



Primary Maker: Roy Lichtenstein
Nationality: American
Date: after 1950
Credit Line: Museum purchase, Ruth Sabin Weston Fund
Medium: silkscreen on paper
Dimensions: frame: 41 9/16 x 27 3/8 in. (105.5 x 69.5 cm)
Classification: PRINTS
Object number: 68.7



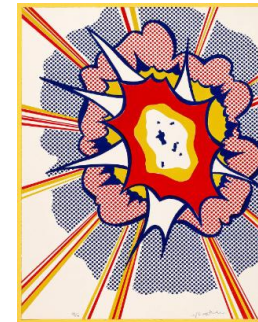
Primary Maker: Roy Lichtenstein
Nationality: American
Date: 1968
Credit Line: Gift of Susan W. and Stephen D. Paine, Class of 1954
Medium: silkscreen on aluminum
Dimensions: Overall: 36 1/4 x 36 1/4 in. (92 x 92 cm)
Classification: PRINTS
Object number: 79.29.1



Primary Maker: Roy Lichtenstein
Nationality: American
Date: 1972
Credit Line: Gift of Frederick M. Myers, Class of 1943
Medium: color lithograph and silkscreen
Dimensions: image: 29 1/8 x 17 5/16 in. (74 x 44 cm) frame: 45 1/4 x 30 5/16 in. (115 x 77 cm)
Classification: PRINTS
Object number: 81.46.34



Primary Maker: Roy Lichtenstein
Nationality: American
Date: 1968
Credit Line: Gift of Judy Adams, M.A. Class of 1974
Medium: color lithograph on paper
Dimensions: Overall: 30 x 20 1/16 in. (76.2 x 50.9 cm)
Classification: PRINTS
Object number: 74.54



Primary Maker: Roy Lichtenstein
Nationality: American
Date: 1967
Credit Line: Gift of Sigmund R. Balka, Class of 1956, and Elinor B. Balka
Medium: sceenprint
Dimensions: sheet: 22 x 17 1/4 in. (55.9 x 43.8 cm)
Classification: WCMA Reserve Collection
Object number: RC.89.51