

# Basic Report



**Primary Maker:** Henry Spencer Moore  
**Nationality:** English  
**Three Lambs Grazing**  
**Date:** 1981  
**Credit Line:** Gift of Lockwood Thompson, Class of 1923, Saluting the Classes of 1867, 1892 and 1923  
**Medium:** color lithograph  
**Dimensions:** image: 8 1/2 x 10 in. (21.6 x 25.4 cm)  
Overall: 17 1/2 x 20 in. (44.5 x 50.8 cm)  
**Classification:** PRINTS  
**Object number:** 91.1.20



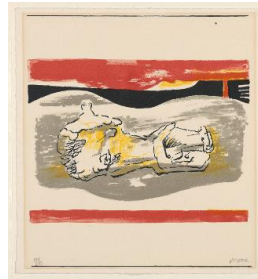
**Primary Maker:** Pablo Picasso  
**Nationality:** Spanish  
**Femme au fauteuil**  
**Date:** 1947  
**Credit Line:** Gift of Peggie Dwight  
**Medium:** color lithograph  
**Dimensions:** Overall: 19 1/2 x 12 3/4 in. (49.5 x 32.4 cm)  
**Classification:** PRINTS  
**Object number:** 91.40.8



**Primary Maker:** Henry Spencer Moore  
**Nationality:** English  
**Seated Figures**  
**Date:** 1957  
**Credit Line:** Gift of Lockwood Thompson, Class of 1923, Saluting the Classes of 1867, 1892 and 1923  
**Medium:** color lithograph  
**Dimensions:** Overall: 21 1/8 x 14 1/4 in. (53.7 x 36.2 cm)  
sheet: 21 3/4 x 15 1/8 in. (55.3 x 38.4 cm)  
**Classification:** PRINTS  
**Object number:** 91.1.9



**Primary Maker:** Honoré Daumier  
**Nationality:** French  
**Le Format de plus en plus monstre**  
**Date:** 1845  
**Credit Line:** Gift of the Class of 1896  
**Medium:** lithograph on paper  
**Dimensions:** Overall: 13 9/16 x 10 1/4 in. (34.5 x 26.1 cm)  
**Classification:** PRINTS  
**Object number:** 23.1



**Primary Maker:** Henry Spencer Moore  
**Nationality:** English  
**Reclining Figure with Red Stripes**  
**Date:** 1973  
**Credit Line:** Gift of Lockwood Thompson, Class of 1923, Saluting the Classes of 1867, 1892 and 1923  
**Medium:** color lithograph  
**Dimensions:** Overall: 9 1/4 x 8 3/4 in. (23.5 x 22.2 cm)  
**Classification:** PRINTS  
**Object number:** 91.1.13



**Primary Maker:** Stow Wengenroth  
**Nationality:** American  
**Ebb Tide**  
**Date:** 1944  
**Credit Line:** Gift of Dr. and Mrs. Gifford M. Lloyd  
**Medium:** lithograph on paper  
**Dimensions:** sheet: 13 1/8 x 18 1/16 in. (33.4 x 45.8 cm)  
image: 10 15/16 x 15 3/8 in. (27.8 x 39 cm)  
**Classification:** PRINTS  
**Object number:** 78.30.22

**Primary Maker:**  
**Anonymous**

Emil Ackerman (1840-?)

**Date:** no date

**Credit Line:** Gift of J.  
Thomas Wilson, Class of  
1925

**Medium:** chromolithograph

**Dimensions:** Overall: 21 7  
/8 x 14 9/16 in. (55.5 x 37  
cm)

**Classification:** PRINTS

**Object number:** 62.42.2



**Primary Maker: Alfredo  
Zalce**

**Nationality:** Mexican  
Lumber Workers: Bay of  
Campeche (from "Mexican  
Art: A Portfolio of Mexican  
People and Places")

**Date:** 1946

**Credit Line:** Gift of Milton  
C. Rose, Class of 1927

**Medium:** color lithograph  
on paper

**Dimensions:** sheet: 14 7/16  
x 17 5/8 in. (36.7 x 44.8  
cm) image: 11 7/16 x 13 11  
/16 in. (29 x 34.8 cm)

**Classification:** PRINTS

**Object number:** 81.31.63



**Primary Maker: Grant  
Wood**

**Nationality:** American  
Approaching Storm

**Date:** 1940

**Credit Line:** Gift of Susan  
and Stuart Crampton, Class  
of 1958

**Medium:** lithograph

**Dimensions:** plate: 11 3/4 x  
8 7/8 in. (29.8 x 22.5 cm)  
frame: 18 3/4 x 14 3/4 in.  
(47.6 x 37.5 cm)

**Classification:** PRINTS

**Object number:** M.  
2003.17.3



**Primary Maker: Andy  
Warhol**

**Nationality:** American  
Dancing Couple

**Date:** c. 1955

**Credit Line:** Gift of Richard  
F. Holmes, Class of 1946

**Medium:** offset | lithograph  
on paper

**Dimensions:** sheet: 8 1/4 x  
10 7/8 in. (21 x 27.6 cm)  
frame: 9 5/8 x 12 1/4 in.  
(24.4 x 31.1 cm)

**Classification:** PRINTS

**Object number:** M.  
2005.17.3