

# Basic Report



**Primary Maker: Mossi Cultural Group**

**Nationality:** Burkina Faso, West Africa

**Bowl with metal insert (possibly a ritual bowl)**

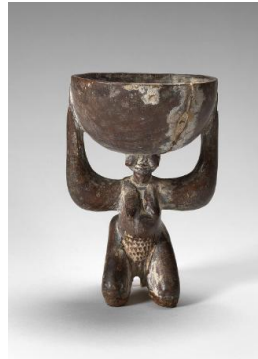
**Date:** early-mid 20th century

**Credit Line:** Gift of Drs. Carolyn and Eli Newberger  
**Medium:** wood, beaten metal

**Dimensions:** 5 1/2 high x 9 3/4 in. diameter (14 x 24.8 cm)

**Classification:** WCMA Reserve Collection

**Object number:** RC.83.7



**Primary Maker: Yoruba Cultural Group**

**Nationality:** Nigeria, West Africa

**Ritual cup with female figure**

**Date:** early 20th century

**Credit Line:** Gift of Drs. Carolyn and Eli Newberger  
**Medium:** wood, white clay (kaolin), libation patina

**Classification:** WCMA

Reserve Collection

**Object number:** RC.83.24



**Primary Maker: Mossi Cultural Group**

**Nationality:** Burkina Faso, West Africa

**Ritual bowl with chicken and metal liner**

**Date:** early 20th century

**Credit Line:** Gift of Drs. Carolyn and Eli Newberger  
**Medium:** wood and metal with pigment

**Dimensions:** 5 1/2 x 5 1/2 in. (14 x 14 cm)

**Classification:** WCMA Reserve Collection

**Object number:** RC.83.31



**Primary Maker: Mossi Cultural Group**

**Nationality:** Burkina Faso, West Africa

**Ritual bowl (3-legged), possibly a divination bowl**

**Date:** early 20th century

**Credit Line:** Gift of Drs. Carolyn and Eli Newberger  
**Medium:** wood

**Dimensions:** 9 high x 10 3/4 in. diam. (22.9 x 27.3 cm)

**Classification:** WCMA Reserve Collection

**Object number:** RC.83.44



**Primary Maker: Mossi Cultural Group**

**Nationality:** Burkina Faso, West Africa

**Ritual bowl with carved design and original repairs**

**Date:** early/mid 20th century

**Credit Line:** Gift of Drs. Carolyn and Eli Newberger  
**Medium:** gourd with potential remnants of ritual matter

**Dimensions:** 5 1/2 high x 13 in. diam. (14 x 33 cm)

**Classification:** WCMA

Reserve Collection

**Object number:** RC.83.53



**Primary Maker: Peul Cultural Group**

**Nationality:** Mali, West Africa

**Eye makeup container + applicator**

**Date:** late 20th century

**Credit Line:** Gift of Drs. Carolyn and Eli Newberger  
**Medium:** porcupine quill, painted leather, wood

**Dimensions:** main superstructure: 4 1/2 in. long (11.4 cm)

**Classification:** WCMA Reserve Collection

**Object number:** RC.83.67.1



**Primary Maker:** Mossi  
**Cultural Group**  
**Nationality:** Burkina Faso,  
 West Africa  
 Calabash pot with raffia  
 handle  
**Date:** mid 20th century  
**Credit Line:** Gift of Drs.  
 Carolyn and Eli Newberger  
**Medium:** gourd with raffia  
**Dimensions:** 11 × 9 1/2 in.  
 (27.9 × 24.1 cm)  
**Classification:** WCMA  
 Reserve Collection  
**Object number:** RC.83.76



**Primary Maker:** West  
 African  
 Calabash drinking vessel  
**Date:** late 20th century  
**Credit Line:** Gift of Drs.  
 Carolyn and Eli Newberger  
**Medium:** gourd  
**Dimensions:** 6 × 7 3/4 in.  
 (15.2 × 19.7 cm)  
**Classification:** WCMA  
 Reserve Collection  
**Object number:** RC.83.82



**Primary Maker:** Mossi  
**Cultural Group**  
**Nationality:** Burkina Faso,  
 West Africa  
 Small leather-covered  
 calabash vessel with  
 stopper  
**Date:** mid 20th century  
**Credit Line:** Gift of Drs.  
 Carolyn and Eli Newberger  
**Medium:** leather with  
 gourd superstructure and  
 plastic ribbon  
**Dimensions:** 3 × 2 1/2 in.  
 (7.6 × 6.4 cm)  
**Classification:** WCMA  
 Reserve Collection  
**Object number:** RC.83.86



**Primary Maker:** Mossi  
**Cultural Group**  
**Nationality:** Burkina Faso,  
 West Africa  
 Calabash carved vessel  
**Date:** mid/late 20th century  
**Credit Line:** Gift of Drs.  
 Carolyn and Eli Newberger  
**Medium:** gourd with added  
 pigment  
**Dimensions:** 4 in. (10.2  
 cm); diameter: 11 in. (27.9  
 cm)  
**Classification:** WCMA  
 Reserve Collection  
**Object number:** RC.83.89.1