

# Basic Report



**Primary Maker:**  
**Staffordshire**  
**Nationality:** British  
**Gaudy Dutch plate**  
**Date:** no date  
**Credit Line:** Gift of Weber  
Arkenburgh, Class of 1902  
**Medium:** handpainted  
earthenware  
**Dimensions:** rim: 7 1/2 in.  
(19.1 cm) height: 7/8 in.  
(2.2 cm)  
**Classification:** DEC ARTS  
**Object number:** 48.2.3.G



**Primary Maker:**  
**Staffordshire**  
**Nationality:** British  
**Gaudy Dutch saucer**  
**Date:** no date  
**Credit Line:** Gift of Weber  
Arkenburgh, Class of 1902  
**Medium:** handpainted  
earthenware  
**Dimensions:** rim: 5 5/8 in.  
(14.3 cm) height: 1 3/8 in.  
(3.5 cm)  
**Classification:** DEC ARTS  
**Object number:** 48.2.3.Q



**Primary Maker:**  
**Staffordshire**  
**Nationality:** British  
**Gaudy Dutch saucer**  
**Date:** no date  
**Credit Line:** Gift of Weber  
Arkenburgh, Class of 1902  
**Medium:** handpainted  
earthenware  
**Dimensions:** rim: 5 11/16  
in. (14.4 cm) height: 1 3/8  
in. (3.5 cm)  
**Classification:** DEC ARTS  
**Object number:** 48.2.3.N



**Primary Maker:**  
**Staffordshire**  
**Nationality:** British  
**Gaudy Dutch plate**  
**Date:** no date  
**Credit Line:** Gift of Weber  
Arkenburgh, Class of 1902  
**Medium:** handpainted  
earthenware  
**Dimensions:** rim: 8 1/4 in.  
(21 cm) height: 1 in. (2.5  
cm)  
**Classification:** DEC ARTS  
**Object number:** 48.2.3.H



**Primary Maker:** British  
**King's Rose China Plate**  
**Date:** no date  
**Credit Line:** Gift of Weber  
Arkenburgh, Class of 1902  
**Medium:** porcelain  
**Dimensions:** rim: 7 in.  
(17.8 cm) Base: 4 3/16 in.  
(10.6 cm) Overall: 15/16 in.  
(2.4 cm)  
**Classification:** DEC ARTS  
**Object number:** 48.2.4.F



**Primary Maker:** British  
**King's Rose China Plate**  
**Date:** no date  
**Credit Line:** Gift of Weber  
Arkenburgh, Class of 1902  
**Medium:** porcelain  
**Dimensions:** rim: 8 1/4 in.  
(21 cm) Base: 5 1/16 in.  
(12.8 cm) Overall: 7/8 in.  
(2.2 cm)  
**Classification:** DEC ARTS  
**Object number:** 48.2.4.G



**Primary Maker:**  
**Staffordshire**

**Nationality:** British  
Gaudy Dutch saucer

**Date:** no date

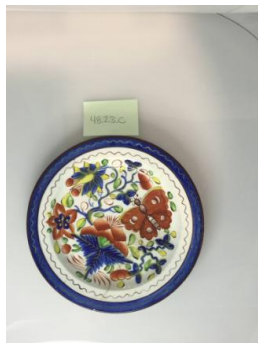
**Credit Line:** Gift of Weber  
Arkenburgh, Class of 1902

**Medium:** handpainted  
earthenware

**Dimensions:** rim: 5 9/16 in.  
(14.1 cm) height: 1 3/16 in.  
(3 cm)

**Classification:** DEC ARTS

**Object number:** 48.2.3.R



**Primary Maker:**  
**Staffordshire**

**Nationality:** British  
Gaudy Dutch plate

**Date:** no date

**Credit Line:** Gift of Weber  
Arkenburgh, Class of 1902

**Medium:** handpainted  
earthenware

**Dimensions:** rim: 6 1/4 in.  
(15.9 cm) height: 3/4 in.  
(1.9 cm)

**Classification:** DEC ARTS

**Object number:** 48.2.3.C



**Primary Maker:**  
**Staffordshire**

**Nationality:** British  
Gaudy Dutch plate

**Date:** no date

**Credit Line:** Gift of Weber  
Arkenburgh, Class of 1902

**Medium:** handpainted  
earthenware

**Dimensions:** rim: 8 1/4 in.  
(21 cm) height: 1 3/8 in.  
(3.5 cm)

**Classification:** DEC ARTS

**Object number:** 48.2.3.M



**Primary Maker:**  
**Staffordshire**

**Nationality:** British  
Gaudy Dutch Teapot

**Date:** no date

**Credit Line:** Gift of Weber  
Arkenburgh, Class of 1902

**Medium:** handpainted  
earthenware

**Dimensions:** rim: 5 1/4 in.  
(13.3 cm) height: 5 15/16  
in. (15.1 cm)

**Classification:** DEC ARTS

**Object number:** 48.2.3.Y