

# Basic Report

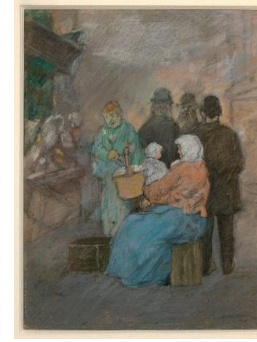
---



**Primary Maker:** Benton  
**Murdoch Spruance**  
**Nationality:** American  
**Dark Bed** (Study for lithograph)  
**Date:** c. 1961  
**Credit Line:** Gift of Sigmund R. Balka, Class of 1956, and Elinor B. Balka  
**Medium:** pastel  
**Dimensions:** frame: 25 3/4 x 35 in. (65.4 x 88.9 cm)  
image: 18 1/2 x 27 3/4 in. (47 x 70.5 cm)  
**Classification:** WCMA Reserve Collection  
**Object number:** RC.89.146



**Primary Maker:** Jim  
**Schantz**  
**Nationality:** American  
**September Dusk,**  
**Housatonic Reflection**  
**Date:** 2003  
**Credit Line:** Gift of Bernie and Sue Pucker in honor of Jo Silipo, Class of 1979 and Laurie Thomsen, Class of 1979  
**Medium:** pastel  
**Dimensions:** Overall: 47 1/2 x 36 in. (120.7 x 91.4 cm) frame: 56 x 43 3/4 x 2 5/8 in. (142.2 x 111.1 x 6.7 cm)  
**Classification:** WCMA Reserve Collection  
**Object number:** RC.64



**Primary Maker:** Jerome  
**Myers**  
**Nationality:** American  
**Lower East Side**  
**Date:** 1935  
**Credit Line:** Gift of Raymond J. and Margaret Horowitz  
**Medium:** pastel  
**Dimensions:** Overall: 12 1/2 x 9 1/2 in. (31.8 x 24.1 cm)  
**Classification:** DRAWING  
**Object number:** M.2007.14