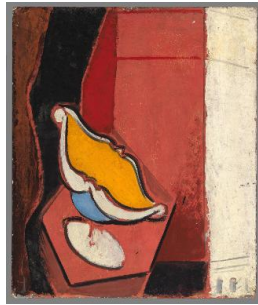


Basic Report



Primary Maker: John Atkinson Grimshaw
Nationality: British
Study of Reflections on the Thames
Date: 1880
Credit Line: Bequest of Charles C. Cunningham
Medium: oil on composition board
Dimensions: frame: 16 x 20 in. (40.6 x 50.8 cm)
Classification: PAINTING
Object number: 80.12



Primary Maker: Alfred Henry Maurer
Nationality: American
Still Life (unfinished)
Date: no date
Credit Line: Anonymous gift
Medium: oil on composition board
Dimensions: Overall: 21 3/4 x 18 1/8 in. (55.2 x 46 cm)
Classification: PAINTING
Object number: 78.17.2



Primary Maker: William Trost Richards
Nationality: American
A Wheat Sheaf, Farm, Chester County, Pennsylvania
Date: c. 1885
Credit Line: Presented by the National Academy of Design from the Mrs. William T. Brewster Bequest
Medium: oil on composition board
Dimensions: frame: 18 11/16 x 29 9/16 in. (47.5 x 75.1 cm) image: 9 13/16 x 19 13/16 in. (25 x 50.3 cm)
Classification: PAINTING
Object number: 54.36.3