

Basic Report



Primary Maker: Scott Prior

Nationality: American
Lump in Landscape,
Atlanta, Georgia

Date: 1977

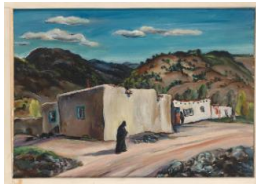
Credit Line: Gift of Susan W. and Stephen D. Paine, Class of 1954

Medium: oil on board

Dimensions: Overall: 6 1/8 x 6 1/16 x 1 13/16 in. (15.5 x 15.4 x 4.6 cm) frame: 8 7/8 x 8 3/4 in. (22.5 x 22.3 cm)

Classification: PAINTING

Object number: 81.45.28



Primary Maker: Marion Huse

Nationality: American
Down the Road (New Mexico) - "The Midwife"

Date: c. 1938

Credit Line: Gift of Mrs. Harriet G. Miller, 1938

Medium: oil on board

Dimensions: Overall: 14 x 20 7/8 in. (35.6 x 53 cm) frame: 21 x 26 15/16 in. (53.4 x 68.5 cm)

Classification: PAINTING

Object number: PA.46



Primary Maker: Wesley Lea

Nationality: American
Flowering Shrubs

Date: 1955

Credit Line: Bequest of Kathryn Hurd

Medium: oil on board

Dimensions: Overall: 12 x 15 7/8 in. (30.5 x 40.4 cm) frame: 17 7/16 x 21 7/16 in. (44.3 x 54.5 cm)

Classification: PAINTING

Object number: 82.22.16



Primary Maker: Scott Prior

Nationality: American
Untitled (Landscape)

Date: no date

Credit Line: Gift of Susan W. and Stephen D. Paine, Class of 1954

Medium: oil on board

Dimensions: Overall: 5 3/8 x 6 1/16 in. (13.7 x 15.4 cm) frame: 7 1/16 x 7 11/16 in. (18 x 19.5 cm)

Classification: PAINTING

Object number: 81.45.29



Primary Maker: Robert and Joseph Cornell

Nationality: American
Ravel Unfoldment

Date: July 15, 1965

Credit Line: Bequest of Lawrence H. Bloedel, Class of 1923, Courtesy of the Whitney Museum of American Art

Medium: oil on board

Dimensions: Overall: 11 7/8 x 9 1/16 in. (30.1 x 23 cm) image: 10 1/16 x 8 in. (25.6 x 20.3 cm)

Classification: PAINTING

Object number: 85.40.1



Primary Maker: Carl Alvin Hall

Nationality: American
Early Spring

Date: 1955

Credit Line: Bequest of Lawrence H. Bloedel, Class of 1923

Medium: oil on board

Dimensions: Overall: 30 5/16 x 48 1/16 in. (77 x 122 cm)

Classification: PAINTING

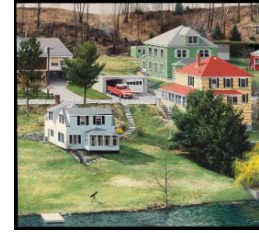
Object number: 77.9.48



Primary Maker: Yovan Radenkovitch
Nationality: American
Flower Piece - Poppies
Date: after 1950
Credit Line: Gift of Seward Eric
Medium: oil on board
Dimensions: frame: 38 3/8 x 33 9/16 in. (97.5 x 85.3 cm) Overall: 29 7/16 x 24 9/16 in. (74.7 x 62.4 cm)
Classification: PAINTING
Object number: 60.40



Primary Maker: Joseph Barker
Nationality: American
New York Skyline
Date: 1950-60's ?
Credit Line: Bequest of Kathryn Hurd
Medium: oil on board
Dimensions: frame: 12 1/4 x 28 3/16 in. (31.1 x 71.6 cm) image: 7 7/8 x 23 7/8 in. (20 x 60.6 cm)
Classification: PAINTING
Object number: 82.22.8



Primary Maker: Scott Prior
Nationality: American
The House Where I Was Born
Date: 1979
Credit Line: Gift of Susan W. and Stephen D. Paine, Class of 1954
Medium: oil on board
Dimensions: Overall: 19 13/16 x 21 7/8 in. (50.3 x 55.5 cm) frame: 21 15/16 x 23 7/8 in. (55.7 x 60.6 cm)
Classification: PAINTING
Object number: 81.45.27



Primary Maker: Gorman Powers
Nationality: American
Farm, Ramapoo Road, Connecticut
Date: 1955
Credit Line: Bequest of Lawrence H. Bloedel, Class of 1923, Courtesy of the Whitney Museum of American Art
Medium: oil on board
Dimensions: frame: 33 1/2 x 39 1/2 x 2 1/2 in. (85.1 x 100.3 x 6.4 cm)
Classification: PAINTING
Object number: 85.40.8