

# Basic Report



**Primary Maker:** Tu Yüan-li

**Nationality:** Chinese

**Album of ten landscapes**

**Date:** Ming period (1368-1644)

**Credit Line:** Selection from the Peterson Collection, Gift of William Bingham II  
**Medium:** ink and color on silk

**Dimensions:** Overall: 13 5/8 x 9 1/2 x 7/8 in. (34.6 x 24.2 x 2.3 cm)

**Classification:** EASTERN

**Object number:** 41.15.41



**Primary Maker:** Li Gonglin

**Nationality:** Chinese

**Album of paintings of Arhats or LO-hans**

**Date:** no date

**Credit Line:** Selection from the Peterson Collection, Gift of William Bingham II  
**Medium:** ink and color on silk

**Dimensions:** Overall: 13 9/16 x 18 5/8 in. (34.5 x 47.3 cm) thickness: 1 3/8 in. (3.5 cm)

**Classification:** EASTERN

**Object number:** 41.15.46



**Primary Maker:**

**Anonymous (Japanese?)**

**Nationality:** Japanese?

**War of Suan**

**Date:** no date

**Credit Line:** Found in the collection and catalogued, 1992

**Medium:** ink and color on silk

**Dimensions:** Storage: 33 x 6.7 cm (13 x 2 5/8 in.) 484 3/4 x 13 1/8 in. (1231.3 x 33.3 cm)

**Classification:** EASTERN

**Object number:** 92.5.175



**Primary Maker:** Tai Hsi

**Nationality:** Chinese

**Landscape**

**Date:** 1801-1861

**Credit Line:** Selection from the Peterson Collection, Gift of William Bingham II  
**Medium:** ink and color on silk

**Dimensions:** 77 x 26 3/8 in. (195.6 x 67 cm) image: 69 3/4 x 18 5/8 in. (177.2 x 47.3 cm) Storage: 66.7 x 5.1 cm (26 1/4 x 2 in.)

**Classification:** EASTERN

**Object number:** 41.15.12



**Primary Maker:** Tung Kwang-ao

**Nationality:** Chinese

**Young lady feeding a parrot**

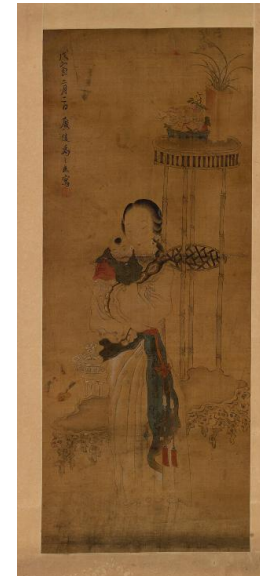
**Date:** 1644-1912

**Credit Line:** Selection from the Peterson Collection, Gift of William Bingham II  
**Medium:** ink and color on silk

**Dimensions:** frame: 36 x 15 1/16 in. (91.5 x 38.3 cm)

**Classification:** EASTERN

**Object number:** 41.15.33



**Primary Maker:** Yu Chi-chou

**Nationality:** Chinese

**Portrait of a mother and her son**

**Date:** 1758

**Credit Line:** Selection from the Peterson Collection, Gift of William Bingham II  
**Medium:** ink and color on silk

**Dimensions:** Storage: 56.5 x 5.4 cm (22 1/4 x 2 1/8 in.) 44 3/8 x 22 3/16 in. (112.7 x 56.4 cm) image: 36 5/8 x 14 5/8 in. (93 x 37.1 cm)

**Classification:** EASTERN

**Object number:** 41.15.36



**Primary Maker: Chinese**

**Nationality:** Chinese

Untitled Palace Scene with  
calligraphy

**Date:** no date

**Credit Line:** Selection from  
the Peterson Collection,  
Gift of William Bingham II

**Medium:** ink and color on  
silk

**Dimensions:** Storage: 40 x  
6.4 cm (15 3/4 x 2 1/2 in.)  
334 1/4 x 15 1/2 in. (849 x  
39.4 cm)

**Classification:** EASTERN

**Object number:** 41.15.60



**Primary Maker: After  
Chou Liang-Kung**

**Nationality:** Chinese

Album of twelve  
landscapes with calligraphy

**Date:** 19th century

**Credit Line:** Selection from  
the Peterson Collection,  
Gift of William Bingham II

**Medium:** ink and color on  
silk

**Classification:** EASTERN

**Object number:** 41.15.48

**Primary Maker: Jo-shui**

**Wang Yüan**

**Nationality:** Chinese

Flower Still Life with

Flower still-life with  
calligraphy

**Date:** 14th century?

**Credit Line:** Selection from  
the Peterson Collection,  
Gift of William Bingham II

**Medium:** ink and color on  
silk

**Dimensions:** Storage: 33.7  
x 6.4 cm (13 1/4 x 2 1/2  
in.) 348 x 13 1/4 in. (883.9  
x 33.7 cm) image ( 1-  
calligraphy): 49 5/8 x 11 1  
/4 in. (126 x 28.6 cm)  
image (2- flowers): 62 3/4  
x 10 5/8 in. (159.4 x 27  
cm) image (3 -  
calligraphy): 39 1/2 x 10 3  
/4 in. (100.3 x 27.3 cm)

**Classification:** EASTERN

**Object number:** 41.15.15









**Primary Maker:** Hu  
Ch'ang-Ch'ing

**Nationality:** Chinese  
Landscape

**Date:** Imitation of 10th  
century

**Credit Line:** Selection from  
the Peterson Collection,  
Gift of William Bingham II

**Medium:** ink and color on  
silk

**Dimensions:** image: 50 5/8  
x 18 5/8 in. (128.6 x 47.3  
cm) 68 x 24 7/8 in. (172.7  
x 63.2 cm) Storage: 63.5 x  
5.1 cm (25 x 2 in.)

**Classification:** EASTERN

**Object number:** 41.15.11