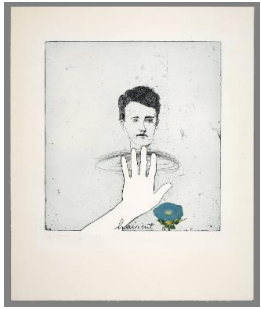


Basic Report



Primary Maker: Jim Dine

Nationality: American

Blue Haircut

Date: 1972

Credit Line: Gift of Thomas
J. Branchick

Medium: etching with
offset lithography and
embossing

Dimensions: sheet: 21 1/4
× 19 3/4 in. (54 × 50.2 cm)
frame: 34 1/2 × 28 1/4 in.
(87.6 × 71.8 cm)

Classification: PRINTS

Object number: M.
2014.19.1