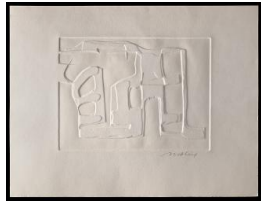
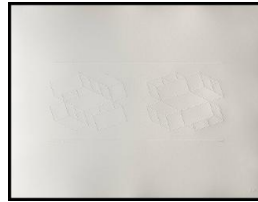


# Basic Report

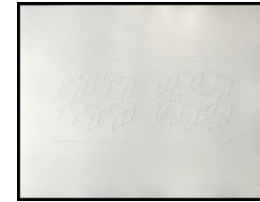
---



**Primary Maker:** Brita Molin  
**Nationality:** Swedish  
**Untitled**  
**Date:** probably after 1950  
**Credit Line:** Gift of Milton C. Rose, Class of 1927  
**Medium:** embossed print  
**Dimensions:** sheet: 13 3/4 x 18 in. (35 x 45.7 cm)  
plate: 8 1/8 x 10 15/16 in. (20.7 x 27.8 cm)  
**Classification:** PRINTS  
**Object number:** 81.31.60



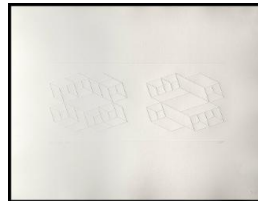
**Primary Maker:** Josef Albers  
**Nationality:** American  
**Embossed Linear**  
**Construction 1-D**  
**Date:** 1969  
**Credit Line:** Gift of Frederick M. Myers, Class of 1943  
**Medium:** embossed print  
**Dimensions:** sheet: 20 1/16 x 26 1/16 in. (50.9 x 66.2 cm)  
plate: 8 x 18 1/16 in. (20.3 x 45.8 cm)  
**Classification:** PRINTS  
**Object number:** 81.46.7



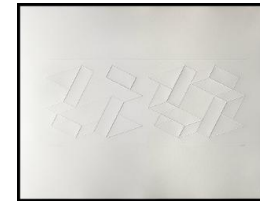
**Primary Maker:** Josef Albers  
**Nationality:** American  
**Embossed Linear**  
**Construction 1-C**  
**Date:** 1969  
**Credit Line:** Gift of Frederick M. Myers, Class of 1943  
**Medium:** embossed print  
**Dimensions:** sheet: 20 x 26 1/16 in. (50.8 x 66.2 cm)  
plate: 7 15/16 x 18 1/16 in. (20.2 x 45.8 cm)  
**Classification:** PRINTS  
**Object number:** 81.46.6



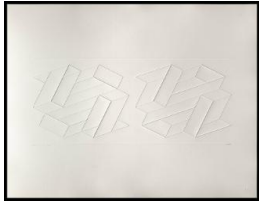
**Primary Maker:** Josef Albers  
**Nationality:** American  
**Embossed Linear**  
**Construction 2-C**  
**Date:** 1969  
**Credit Line:** Gift of Frederick M. Myers, Class of 1943  
**Medium:** embossed print  
**Dimensions:** sheet: 20 x 26 1/16 in. (50.8 x 66.2 cm)  
plate: 8 11/16 x 20 9/16 in. (22.1 x 52.2 cm)  
**Classification:** PRINTS  
**Object number:** 81.46.10



**Primary Maker:** Josef Albers  
**Nationality:** American  
**Embossed Linear**  
**Construction 1-B**  
**Date:** 1969  
**Credit Line:** Gift of Frederick M. Myers, Class of 1943  
**Medium:** embossed print  
**Dimensions:** sheet: 20 1/16 x 26 1/8 in. (51 x 66.4 cm)  
plate: 7 15/16 x 18 1/16 in. (20.2 x 45.8 cm)  
**Classification:** PRINTS  
**Object number:** 81.46.5



**Primary Maker:** Josef Albers  
**Nationality:** American  
**Embossed Linear**  
**Construction 2-A**  
**Date:** 1969  
**Credit Line:** Gift of Frederick M. Myers, Class of 1943  
**Medium:** embossed print  
**Dimensions:** sheet: 20 1/16 x 26 1/16 in. (50.9 x 66.2 cm)  
plate: 8 11/16 x 20 11/16 in. (22.1 x 52.5 cm)  
**Classification:** PRINTS  
**Object number:** 81.46.8



**Primary Maker: Josef Albers**

**Nationality:** American  
Embossed Linear  
Construction 2-B

**Date:** 1969

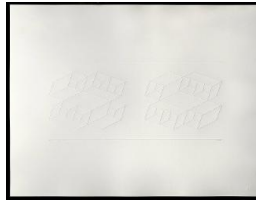
**Credit Line:** Gift of  
Frederick M. Myers, Class  
of 1943

**Medium:** embossed print

**Dimensions:** sheet: 20 1/16  
x 26 1/16 in. (50.9 x 66.2  
cm) plate: 8 3/4 x 20 11/16  
in. (22.2 x 52.5 cm)

**Classification:** PRINTS

**Object number:** 81.46.9



**Primary Maker: Josef Albers**

**Nationality:** American  
Embossed Linear  
Constructions 1-A

**Date:** 1969

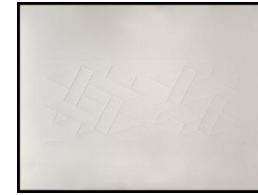
**Credit Line:** Gift of  
Frederick M. Myers, Class  
of 1943

**Medium:** embossed print

**Dimensions:** sheet: 20 1/16  
x 26 1/8 in. (50.9 x 66.4  
cm) plate: 7 15/16 x 18 1/8  
in. (20.2 x 46 cm)

**Classification:** PRINTS

**Object number:** 81.46.4



**Primary Maker: Josef Albers**

**Nationality:** American  
Embossed Linear  
Construction 2-D

**Date:** 1969

**Credit Line:** Gift of  
Frederick M. Myers, Class  
of 1943

**Medium:** embossed print

**Dimensions:** sheet: 20 1/16  
x 26 1/16 in. (51 x 66.2  
cm) plate: 8 11/16 x 20 5/8  
in. (22.1 x 52.4 cm)

**Classification:** PRINTS

**Object number:** 81.46.11