

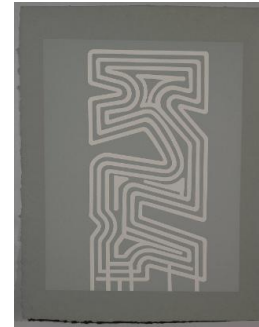
Basic Report



Primary Maker: Robert Motherwell
Nationality: American
Untitled #8 (from "The Basque Suite")
Date: 1974
Credit Line: Anonymous gift
Medium: color silk screen on paper
Dimensions: sheet: 40 9/16 x 27 7/8 in. (103 x 70.8 cm) plate: 28 1/8 x 22 in. (71.5 x 55.9 cm)
Classification: PRINTS
Object number: 85.13.1



Primary Maker: CHRYSsa
Nationality: American
Untitled (from "The Gates to Times Square")
Date: no date
Credit Line: Gift of Martin J. Oppenheimer
Medium: color silk screen on paper
Dimensions: sheet: 40 3/16 x 29 15/16 in. (102.1 x 76 cm)
Classification: PRINTS
Object number: 82.21.6.D



Primary Maker: CHRYSsa
Nationality: American
Untitled (from "The Gates to Times Square")
Date: no date
Credit Line: Gift of Martin J. Oppenheimer
Medium: color silk screen on paper
Dimensions: sheet: 40 1/4 x 29 15/16 in. (102.2 x 76.1 cm) image: 32 1/16 x 24 5/8 in. (81.5 x 62.5 cm)
Classification: PRINTS
Object number: 82.21.6.I



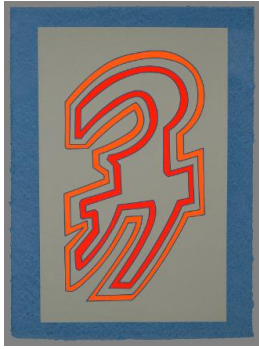
Primary Maker: Patrick Hughes
Nationality: British
Untitled (from "The Domestic Life of the Rainbow")
Date: 1979
Credit Line: Gift of Jerome Singer, through the Martin S. Ackerman Foundation
Medium: color silk screen on paper
Dimensions: Overall: 5 9/16 x 8 7/8 in. (14.1 x 22.5 cm)
Classification: PRINTS
Object number: 80.25.3.C



Primary Maker: Patrick Hughes
Nationality: British
Untitled (from "The Domestic Life of the Rainbow")
Date: 1979
Credit Line: Gift of Jerome Singer, through the Martin S. Ackerman Foundation
Medium: color silk screen on paper
Dimensions: sheet: 8 7/8 x 5 1/2 in. (22.5 x 14 cm)
Classification: PRINTS
Object number: 80.25.3.H



Primary Maker: CHRYSsa
Nationality: American
Untitled (from "The Gates to Times Square")
Date: no date
Credit Line: Gift of Martin J. Oppenheimer
Medium: color silk screen on paper
Dimensions: sheet: 40 1/4 x 30 9/16 in. (102.2 x 77.6 cm) image: 33 3/4 x 17 13/16 in. (85.7 x 45.2 cm)
Classification: PRINTS
Object number: 82.21.6.O



Primary Maker:
CHRYSSA

Nationality: American
Untitled (from "The Gates
to Times Square")

Date: no date

Credit Line: Gift of Martin J.
Oppenheimer

Medium: color silkscreen
on paper

Dimensions: sheet: 40 1/4
x 29 in. (102.2 x 73.7 cm)
image: 35 13/16 x 22 5/8
in. (91 x 57.5 cm)

Classification: PRINTS

Object number: 82.21.6.F



Primary Maker: Charles
Ross

Nationality: American
Star Space Nightlight
Milkyway Center by Earth
Hour

Date: 1980

Credit Line: Gift of Martin J.
Oppenheimer

Medium: color silkscreen
on paper

Dimensions: image: 29 15
/16 x 37 1/4 in. (76 x 94.6
cm) sheet: 36 x 40 1/4 in.
(91.4 x 102.3 cm)

Classification: PRINTS

Object number: 82.21.3.A



Primary Maker: Charles
Ross

Nationality: American
Star Space Daylight
Milkyway Center by Earth
Hour

Date: 1980

Credit Line: Gift of Martin J.
Oppenheimer

Medium: color silkscreen
on paper

Dimensions: image: 30 x
37 3/16 in. (76.2 x 94.5
cm) sheet: 36 x 40 5/16 in.
(91.4 x 102.4 cm)

Classification: PRINTS

Object number: 82.21.3.C



Primary Maker:
CHRYSSA

Nationality: American
Untitled (from "The Gates
to Times Square")

Date: no date

Credit Line: Gift of Martin J.
Oppenheimer

Medium: color silkscreen
on paper

Dimensions: sheet: 40 3/16
x 30 in. (102 x 76.2 cm)
image: 32 3/16 x 24 5/8 in.
(81.7 x 62.6 cm)

Classification: PRINTS

Object number: 82.21.6.K