

# Basic Report

---



**Primary Maker:**  
**Anonymous (Chinese)**  
**Nationality:** Chinese  
**Portrait of a heavenly fairy**  
**Date:** 17th-18th century  
**Credit Line:** Selection from  
the Peterson Collection,  
Gift of William Bingham II  
**Medium:** color on silk  
**Dimensions:** frame: 34 7  
/16 x 21 7/16 in. (87.5 x  
54.5 cm)  
**Classification:** EASTERN  
**Object number:** 41.15.39



**Primary Maker:** Li Yao  
**Nationality:** Chinese  
**Untitled Sketch**  
**Date:** no date  
**Credit Line:** Selection from  
the Peterson Collection,  
Gift of William Bingham II  
**Medium:** color on silk  
**Dimensions:** frame: 37 3/8  
x 18 3/4 in. (95 x 47.6 cm)  
**Classification:** EASTERN  
**Object number:** 41.15.38



**Primary Maker:** Lu Chih  
**Nationality:** Chinese  
**Autumn landscape with  
calligraphy**  
**Date:** no date  
**Credit Line:** Selection from  
the Peterson Collection,  
Gift of William Bingham II  
**Medium:** color on silk  
**Dimensions:** 302 1/8 x 11 7  
/8 in. (767.4 x 30.2 cm)  
**Classification:** EASTERN  
**Object number:** 41.15.13



**Primary Maker:** Chou Jen-ho

**Nationality:** Chinese  
Flower still-life

**Date:** 1804?

**Credit Line:** Selection from the Peterson Collection, Gift of William Bingham II

**Medium:** color on silk

**Dimensions:** Overall: 41 9/16 x 20 1/16 in. (105.5 x 51 cm)

**Classification:** EASTERN

**Object number:** 41.15.14



**Primary Maker:** Gai Qi

**Nationality:** Chinese  
Portraits of great scholars of the Tang Dynasty

**Date:** 1828

**Credit Line:** Selection from the Peterson Collection, Gift of William Bingham II

**Medium:** color on silk

**Classification:** EASTERN

**Object number:** 41.15.29



**Primary Maker:** 'Ye T'ung

**Nationality:** Chinese  
Flower Still-Life

**Date:** Ming Dynasty

**Credit Line:** Selection from the Peterson Collection, Gift of William Bingham II

**Medium:** color on silk

**Dimensions:** frame: 57 1/2 x 21 1/8 in. (146 x 53.6 cm)

**Classification:** EASTERN

**Object number:** 41.15.16



**Primary Maker:** Lu Shi-tao

**Nationality:** Chinese  
Album of twelve bird and flower pictures

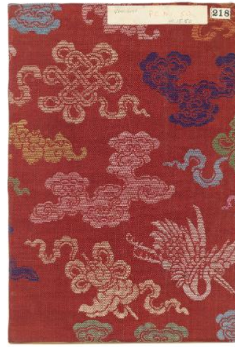
**Date:** 1623

**Credit Line:** Selection from the Peterson Collection, Gift of William Bingham II  
**Medium:** color on silk

**Dimensions:** Overall: 13 1/8 x 8 11/16 x 11/16 in. (33.3 x 22.1 x 1.8 cm)

**Classification:** EASTERN

**Object number:** 41.15.42



**Primary Maker:**  
**Anonymous (Chinese)**

**Nationality:** Chinese  
Album of twelve paintings  
1. Two scholars examining a drawing of bamboo leaves 2. Cherry trees enveloped by mist 3. A woman on a terrace with bananas bathing her baby 4. A cottage in the hills 5. A fisherman clad in a blue coat resting in his

**Date:** 19th century?

**Credit Line:** Selection from the Peterson Collection, Gift of William Bingham II

**Medium:** color on silk

**Dimensions:** Overall: 9 5/8 x 6 7/16 x 15/16 in. (24.5 x 16.4 x 2.4 cm)

**Classification:** EASTERN

**Object number:** 41.15.50



**Primary Maker:** After Chou Ch'ên

Twelve portraits of national officials and heroes of the Ming Dynasty

**Date:** 19th century

**Credit Line:** Selection from the Peterson Collection, Gift of William Bingham II  
**Medium:** color on silk

**Dimensions:** Overall: 11 1/2 x 7 3/16 x 13/16 in. (29.2 x 18.2 x 2 cm)

**Classification:** EASTERN

**Object number:** 41.15.45



**Primary Maker:**  
**Anonymous (Chinese)**

**Nationality:** Chinese  
Two sages accompanied by servants amid pine and Wutong trees

**Date:** 15th or 16th century

**Credit Line:** Selection from the Peterson Collection, Gift of William Bingham II

**Medium:** color on silk

**Dimensions:** Overall: 21 1/2 x 10 15/16 in. (54.6 x 27.8 cm)

**Classification:** EASTERN

**Object number:** 41.15.37