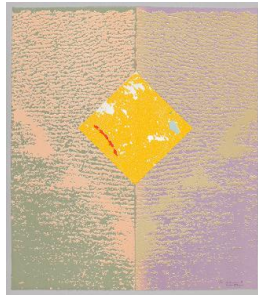


Basic Report



Primary Maker: Alfredo Zalce

Nationality: Mexican
Lumber Workers: Bay of Campeche (from "Mexican Art: A Portfolio of Mexican People and Places")
Date: 1946
Credit Line: Gift of Milton C. Rose, Class of 1927
Medium: color lithograph on paper
Dimensions: sheet: 14 7/16 x 17 5/8 in. (36.7 x 44.8 cm) image: 11 7/16 x 13 11/16 in. (29 x 34.8 cm)
Classification: PRINTS
Object number: 81.31.63



Primary Maker: June C. Wayne

Nationality: American
Meridian (from "My Palomar")
Date: 1983-1985
Credit Line: Gift of Robert Conway, Class of 1967
Medium: color lithograph on paper
Dimensions: 20 x 17 1/2 in. (50.8 x 44.5 cm) sheet: 19 x 16 1/2 in. (48.3 x 41.9 cm)
Classification: PRINTS
Object number: M.2013.4.4. A



Primary Maker: June C. Wayne

Nationality: American
Over and Out (from "My Palomar")
Date: 1983-1985
Credit Line: Gift of Robert Conway, Class of 1967
Medium: color lithograph on paper
Dimensions: 20 x 17 1/2 in. (50.8 x 44.5 cm) sheet: 19 x 16 1/2 in. (48.3 x 41.9 cm)
Classification: PRINTS
Object number: M.2013.4.4. I



Primary Maker: Henry Spencer Moore

Nationality: English
Eight Reclining Figures
Date: 1963
Credit Line: Gift of Lockwood Thompson, Class of 1923, Saluting the Classes of 1867, 1892 and 1923
Medium: color lithograph on paper
Dimensions: sheet: 25 3/4 x 19 13/16 in. (65.4 x 50.3 cm) image: 16 15/16 x 12 7/8 in. (43 x 32.7 cm)
Classification: PRINTS
Object number: 91.1.11



Primary Maker: Lyonel Feininger

Nationality: American
Untitled (Cityscape)
Date: 1944
Credit Line: Student Art Loan Program, Museum Purchase, Fulkerson Fund for Leadership in the Arts
Medium: color lithograph on paper
Dimensions: image: 16 7/8 x 12 in. (42.9 x 30.5 cm) frame: 17 x 23 x 1 1/4 in. (43.2 x 58.4 x 3.2 cm)
Classification: WALLS
Object number: SL. 2013.22.10

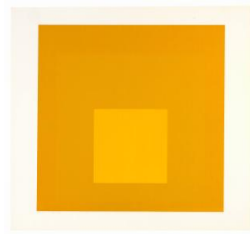


Primary Maker: Jasper Johns

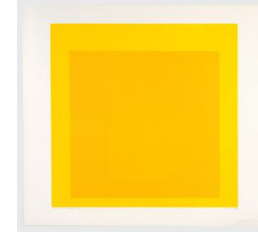
Nationality: American
Decoy (ULAE 98)
Date: 1971
Credit Line: Gift of Madeleine P. and Harvey R. Plonsker, Class of 1961
Medium: color lithograph on paper
Dimensions: sheet: 41 3/8 x 29 5/8 in. (105.1 x 75.2 cm)
Classification: PRINTS
Object number: M. 2016.26.25



Primary Maker: Sam Francis
Nationality: American
Affiche Kunsthalle Bern (SF-5)
Date: 1960
Credit Line: Gift of Edgar Wachenheim III, Class of 1959
Medium: color lithograph on paper
Dimensions: 35 1/2 x 25 in. (90.2 x 63.5 cm)
Classification: PRINTS
Object number: M.2016.11



Primary Maker: Josef Albers
Nationality: American
Midnight + Noon VI (from the portfolio "Midnight and Noon")
Date: 1964
Credit Line: Gift of Jim Dine
Medium: color lithograph on paper
Dimensions: sheet: 18 7/8 x 20 11/16 in. (48 x 52.5 cm) image: 15 13/16 x 15 7/8 in. (40.1 x 40.4 cm)
Classification: PRINTS
Object number: 77.52.6



Primary Maker: Josef Albers
Nationality: American
Midnight + Noon VIII (from the portfolio "Midnight and Noon")
Date: 1964
Credit Line: Gift of Jim Dine
Medium: color lithograph on paper
Dimensions: sheet: 19 x 20 11/16 in. (48.2 x 52.6 cm) image: 15 3/4 x 15 7/8 in. (40 x 40.3 cm)
Classification: PRINTS
Object number: 77.52.8



Primary Maker: Dieter Roth
Nationality: Swiss
Untitled (from "2 x 5 Bats")
Date: 1978
Credit Line: Gift of Gary Tearston, through Martin S. Ackerman Foundation
Medium: color lithograph on paper
Dimensions: sheet: 19 5/8 x 13 7/8 in. (49.9 x 35.2 cm)
Classification: PRINTS
Object number: 79.60.1