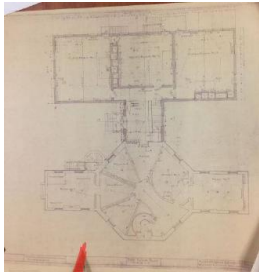
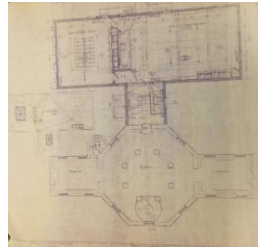


Basic Report



Primary Maker:
Harding and Seaver
Alteration of Lawrence
Hall, Williams College,
Williamstown: 1st Floor Plan
Medium: blueprint facsimile
Dimensions: sheet: 33 1/4
x 39 in. (84.5 x 99 cm)
Classification: PRINTS
Object number: EL.83.3.6.A



Primary Maker:
Harding and Seaver
Alteration of Lawrence
Hall, Williams College,
Williamstown: 2nd Floor
Plan
Medium: blueprint facsimile
Dimensions: sheet: 31 11
/16 x 36 7/16 in. (80.5 x
92.5 cm)
Classification: PRINTS
Object number: EL.83.3.6.B

Primary Maker: Moore,
Grover & Harper
Nationality: American
Lawrence Hall Addition
Architectural Blueprints:
Floor Plans
Date: 1980
Medium: blueprint facsimile
Classification: PRINTS
Object number: EL.83.3.3

Primary Maker: Moore,
Grover & Harper
Nationality: American
Lawrence Hall Addition
Architectural Blueprints:
Floor Plans
Date: 1980
Medium: blueprint facsimile
Classification: PRINTS
Object number: EL.83.3.5

Primary Maker: Charles
Willard Moore
Nationality: American
Shinefield Residence, Sea
Ranch, Sonoma County, CA.
Date: 1969
Credit Line: On extended
loan from Centerbrook: A
Professional Corporation of
Architects and Planners
Medium: blueprint facsimile
Dimensions: Overall: 24 1
/8 x 36 1/16 in. (61.3 x
91.6 cm)
Classification: PRINTS
Object number: EL.86.2.3

Primary Maker: Moore,
Grover & Harper
Nationality: American
Lawrence Hall Addition
Architectural Blueprints:
Preliminary Plans
Date: 1981
Medium: blueprint facsimile
Classification: PRINTS
Object number: EL.83.3.4

Primary Maker: Charles Willard Moore

Nationality: American
Shinefield Residence, Sea Ranch, Sonoma County, CA.

Date: 1969

Credit Line: On extended loan from Centerbrook: A Professional Corporation of Architects and Planners

Medium: blueprint facsimile

Dimensions: Overall: 24 1/8 x 36 1/16 in. (61.3 x 91.6 cm)

Classification: PRINTS

Object number: EL.86.2.4

Primary Maker: Charles Willard Moore

Nationality: American
Shinefield Residence, Sea Ranch, Sonoma County, CA.

Date: 1969

Credit Line: On extended loan from Centerbrook: A Professional Corporation of Architects and Planners

Medium: blueprint facsimile

Dimensions: Overall: 24 1/8 x 36 1/16 in. (61.3 x 91.6 cm)

Classification: PRINTS

Object number: EL.86.2.2

Primary Maker: Charles Willard Moore

Nationality: American
Shinefield Residence, Sea Ranch, Sonoma County, CA.

Date: 1969

Credit Line: On extended loan from Centerbrook: A Professional Corporation of Architects and Planners

Medium: blueprint facsimile

Dimensions: Overall: 24 1/8 x 36 1/16 in. (61.3 x 91.6 cm)

Classification: PRINTS

Object number: EL.86.2.5

Primary Maker: Charles Willard Moore

Nationality: American
Stern House, Woodbridge, CT.

Date: 1969

Credit Line: On extended loan from Centerbrook: A Professional Corporation of Architects and Planners

Medium: blueprint facsimile

Dimensions: Overall: 24 1/8 x 36 1/16 in. (61.3 x 91.6 cm)

Classification: PRINTS

Object number: EL.86.2.7