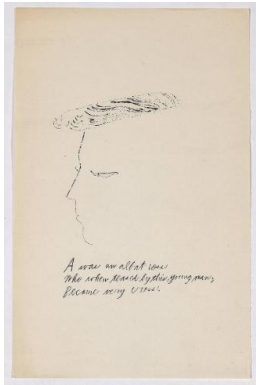


Basic Report



Primary Maker: Andy Warhol

Nationality: American
"A Is An Alphabet" [New York, 1953]. Page 1 of 26 unbound pages, laid into Warhol's labeled wrappers, litho-offset.

Date: 1953

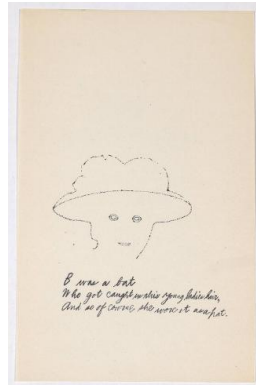
Credit Line: Gift of Richard F. Holmes, Class of 1946

Medium: blotted ink line drawing on paper

Dimensions: Overall: 9 7/16 x 6 in. (24 x 15.2 cm)
fitted box: 10" H x 6 3/4" W x 1 1/4" D

Classification: DEC ARTS

Object number: 95.18.2.A



Primary Maker: Andy Warhol

Nationality: American
"A Is An Alphabet" [New York, 1953]. Page 2 of 26 unbound pages, laid into Warhol's labeled wrappers, litho-offset.

Date: 1953

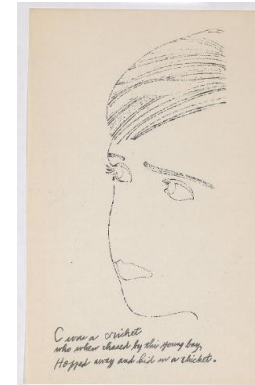
Credit Line: Gift of Richard F. Holmes, Class of 1946

Medium: blotted ink line drawing on paper

Dimensions: Overall: 9 7/16 x 6 in. (24 x 15.2 cm)
fitted box: 10" H x 6 3/4" W x 1 1/4" D

Classification: DEC ARTS

Object number: 95.18.2.B



Primary Maker: Andy Warhol

Nationality: American
"A Is An Alphabet" [New York, 1953]. Page 3 of 26 unbound pages, laid into Warhol's labeled wrappers, litho-offset.

Date: 1953

Credit Line: Gift of Richard F. Holmes, Class of 1946

Medium: blotted ink line drawing on paper

Dimensions: Overall: 9 7/16 x 6 in. (24 x 15.2 cm)
fitted box: 10" H x 6 3/4" W x 1 1/4" D

Classification: DEC ARTS

Object number: 95.18.2.C



Primary Maker: Andy Warhol

Nationality: American
"A Is An Alphabet" [New York, 1953]. Page 4 of 26 unbound pages, laid into Warhol's labeled wrappers, litho-offset.

Date: 1953

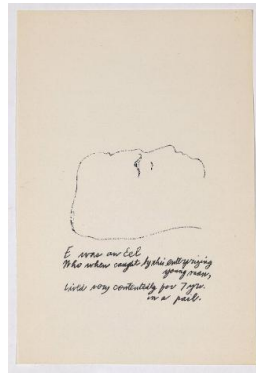
Credit Line: Gift of Richard F. Holmes, Class of 1946

Medium: blotted ink line drawing on paper

Dimensions: Overall: 9 7/16 x 6 in. (24 x 15.2 cm)
fitted box: 10" H x 6 3/4" W x 1 1/4" D

Classification: DEC ARTS

Object number: 95.18.2.D



Primary Maker: Andy Warhol

Nationality: American
"A Is An Alphabet" [New York, 1953]. Page 5 of 26 unbound pages, laid into Warhol's labeled wrappers, litho-offset.

Date: 1953

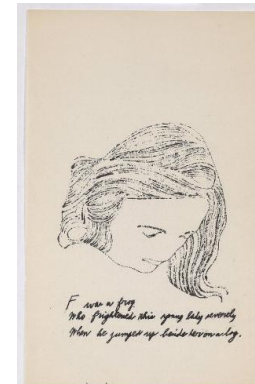
Credit Line: Gift of Richard F. Holmes, Class of 1946

Medium: blotted ink line drawing on paper

Dimensions: Overall: 9 7/16 x 6 in. (24 x 15.2 cm)
fitted box: 10" H x 6 3/4" W x 1 1/4" D

Classification: DEC ARTS

Object number: 95.18.2.E



Primary Maker: Andy Warhol

Nationality: American
"A Is An Alphabet" [New York, 1953]. Page 6 of 26 unbound pages, laid into Warhol's labeled wrappers, litho-offset.

Date: 1953

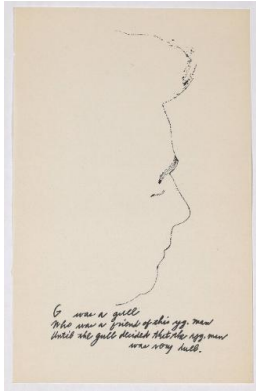
Credit Line: Gift of Richard F. Holmes, Class of 1946

Medium: blotted ink line drawing on paper

Dimensions: Overall: 9 7/16 x 6 in. (24 x 15.2 cm)
fitted box: 10" H x 6 3/4" W x 1 1/4" D

Classification: DEC ARTS

Object number: 95.18.2.F



Primary Maker: Andy Warhol

Nationality: American
"A Is An Alphabet" [New York, 1953]. Page 7 of 26 unbound pages, laid into Warhol's labeled wrappers, litho-offset.

Date: 1953

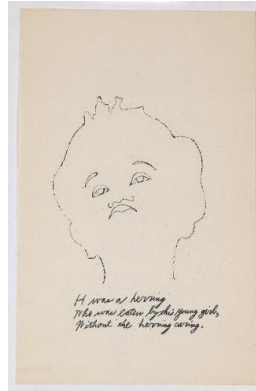
Credit Line: Gift of Richard F. Holmes, Class of 1946

Medium: blotted ink line drawing on paper

Dimensions: Overall: 9 7/16 x 6 in. (24 x 15.2 cm)
fitted box: 10" H x 6 3/4" W x 1 1/4" D

Classification: DEC ARTS

Object number: 95.18.2.G



Primary Maker: Andy Warhol

Nationality: American
"A Is An Alphabet" [New York, 1953]. Page 8 of 26 unbound pages, laid into Warhol's labeled wrappers, litho-offset.

Date: 1953

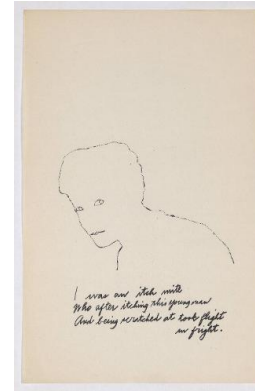
Credit Line: Gift of Richard F. Holmes, Class of 1946

Medium: blotted ink line drawing on paper

Dimensions: Overall: 9 7/16 x 6 in. (24 x 15.2 cm)
fitted box: 10" H x 6 3/4" W x 1 1/4" D

Classification: DEC ARTS

Object number: 95.18.2.H



Primary Maker: Andy Warhol

Nationality: American
"A Is An Alphabet" [New York, 1953]. Page 9 of 26 unbound pages, laid into Warhol's labeled wrappers, litho-offset.

Date: 1953

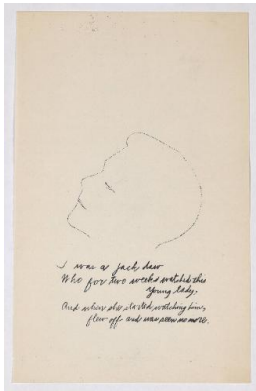
Credit Line: Gift of Richard F. Holmes, Class of 1946

Medium: blotted ink line drawing on paper

Dimensions: Overall: 9 7/16 x 6 in. (24 x 15.2 cm)
fitted box: 10" H x 6 3/4" W x 1 1/4" D

Classification: DEC ARTS

Object number: 95.18.2.I



Primary Maker: Andy Warhol

Nationality: American
"A Is An Alphabet" [New York, 1953]. Page 10 of 26 unbound pages, laid into Warhol's labeled wrappers, litho-offset.

Date: 1953

Credit Line: Gift of Richard F. Holmes, Class of 1946

Medium: blotted ink line drawing on paper

Dimensions: Overall: 9 7/16 x 6 in. (24 x 15.2 cm)
fitted box: 10" H x 6 3/4" W x 1 1/4" D

Classification: DEC ARTS

Object number: 95.18.2.J