

# Basic Report



**Primary Maker:** Jan Forsberg

**Nationality:** Swedish  
Burnt Geometry

**Date:** 1966

**Credit Line:** Gift of Dorothy D. and Frederick Rudolph

**Medium:** color etching on paper

**Dimensions:** Overall: 25 3/16 x 19 9/16 in. (64 x 49.7 cm) frame: 30 11/16 x 23 3/8 in. (78 x 59.3 cm)

**Classification:** WCMA Reserve Collection

**Object number:** RC.3.22



**Primary Maker:** Anders Leonard Zorn

**Nationality:** Swedish  
Ernest Renan

**Date:** 1892

**Credit Line:** Museum purchase, with funds provided by Miss Cornelia A. van Chapin, in memory of Karl E. Weston, Class of 1896

**Medium:** etching on paper

**Dimensions:** sheet: 13 1/8 x 18 3/8 in. (33.3 x 46.6 cm) plate: 9 x 13 5/16 in. (22.9 x 33.8 cm)

**Classification:** PRINTS

**Object number:** 65.15



**Primary Maker:** Mamma Andersson

**Nationality:** Swedish  
Faces

**Date:** 2010

**Credit Line:** Student Art Loan Program, Museum Purchase, Fulkerson Fund for Leadership in the Arts

**Medium:** color spit bite and sugar lift aquatints with aquatint and soft ground etching

**Dimensions:** image: 22 1/8 x 15 11/16 in. (56.2 x 39.8 cm) sheet: 28 5/8 x 21 5/8 in. (72.7 x 54.9 cm) frame: 29 1/4 x 22 1/4 x 3/4 in. (74.3 x 56.5 x 1.9 cm)

**Classification:** WALLS

**Object number:** SL.

2013.25.3



**Primary Maker:** Jan Forsberg

**Nationality:** Swedish  
Four Gamblers

**Date:** 1967

**Credit Line:** Gift of Dorothy D. and Frederick Rudolph

**Medium:** color etching on paper

**Dimensions:** plate: 13 3/4 x 21 1/4 in. (35 x 54 cm) frame: 18 3/8 x 26 in. (46.7 x 66 cm)

**Classification:** PRINTS

**Object number:** 91.35.18



**Primary Maker:** Gosta Aberg

**Nationality:** Swedish  
MARSHALL HJÄLPEN

**Date:** ca. 1945-1950

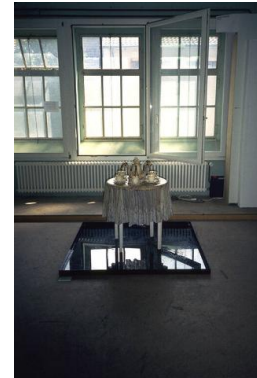
**Credit Line:** Anonymous gift

**Medium:** poster

**Dimensions:** Overall: 29 1/2 x 21 9/16 in. (74.9 x 54.7 cm)

**Classification:** PRINTS

**Object number:** 39.1.389



**Primary Maker:** Mans Wrangé

**Nationality:** Swedish  
Monument (Democratic Coffee Table with Fair Coffee Pot and Equal Coffee Cups)

**Credit Line:** Gift of Peter Norton

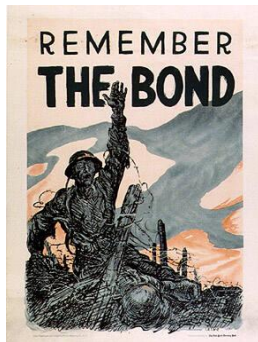
**Medium:** coffee, porcelain, wood, cloth, plastic, electric pump

**Dimensions:** 40 x 25 in. (101.6 x 63.5 cm)

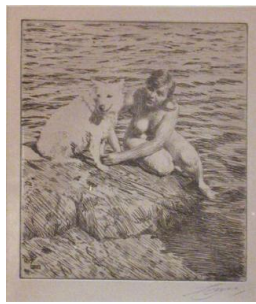
**Classification:** SCULPTURE

**Object number:** M.

2015.17.67



**Primary Maker:** Oscar Edward Cesare  
**Nationality:** Swedish  
**Remember the Bond**  
**Date:** 1918  
**Credit Line:** Anonymous gift  
**Medium:** poster  
**Dimensions:** Overall: 25 1/16 x 18 15/16 in. (63.7 x 48.1 cm)  
**Classification:** PRINTS  
**Object number:** 39.1.65



**Primary Maker:** Anders Leonard Zorn  
**Nationality:** Swedish  
**Sappho**  
**Date:** 1917  
**Credit Line:** Gift of Dr. and Mrs. Edward M. Wheeler  
**Medium:** etching on paper  
**Dimensions:** plate: 8 1/8 x 7 1/16 in. (20.6 x 18 cm)  
frame: 16 5/16 x 14 3/4 in. (41.5 x 37.5 cm)  
**Classification:** PRINTS  
**Object number:** 92.10



**Primary Maker:** Anders Leonard Zorn  
**Nationality:** Swedish  
**Self-Portrait**  
**Date:** 1916  
**Credit Line:** Gift of Joseph O. Eaton, Class of 1895  
**Medium:** etching on paper  
**Dimensions:** sheet: 12 13/16 x 9 15/16 in. (32.5 x 25.2 cm) plate: 7 x 4 3/4 in. (17.8 x 12 cm)  
**Classification:** PRINTS  
**Object number:** 29.2



**Primary Maker:** Anders Leonard Zorn  
**Nationality:** Swedish  
**The Swan**  
**Date:** 1915  
**Credit Line:** Bequest of Jane T. Ritchie  
**Medium:** etching on paper  
**Dimensions:** sheet: 17 7/16 x 12 13/16 in. (44.3 x 32.5 cm) plate: 9 13/16 x 7 13/16 in. (24.9 x 19.8 cm)  
**Classification:** PRINTS  
**Object number:** 85.46.26