

# Basic Report

---



**Primary Maker:** Jesus Mari Lazkano

**Nationality:** Spanish  
1900 Bizkaiko forv aldvndia 2000 (from the artist's dissertation "The distance between the formal in the architecture and the architecture like image")

**Date:** c. 1994

**Credit Line:** Gift from the Susan and Herbert Adler Collection

**Medium:** color intaglio on paper

**Dimensions:** sheet: 20 1/2 x 15 1/8 in. (52.1 x 38.4 cm)

**Classification:** PRINTS

**Object number:** M.2021.9.6



**Primary Maker:** Eduardo Chillida

**Nationality:** Spanish  
1972 Olympic Poster

**Date:** 1972

**Credit Line:** Gift of Lewis Scheffey, Class of 1946

**Medium:** lithograph

**Dimensions:** Overall: 41 9/16 x 28 1/8 in. (105.5 x 71.5 cm)

**Classification:** PRINTS

**Object number:** 79.36.27



**Primary Maker:** Jesus Mari Lazkano

**Nationality:** Spanish  
Aclaraciones Metodologicas (from the artist's dissertation "The distance between the formal in the architecture and the architecture like image")

**Date:** c. 1994

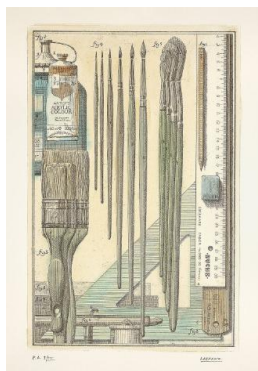
**Credit Line:** Gift from the Susan and Herbert Adler Collection

**Medium:** etching and hand-applied watercolors on wove paper

**Dimensions:** 22 x 16 in. (55.9 x 40.6 cm)

**Classification:** PRINTS

**Object number:** M.2021.9.36



**Primary Maker:** Jesus Mari Lazkano

**Nationality:** Spanish  
Acrylic colour (from the artist's dissertation "The distance between the formal in the architecture and the architecture like image")

**Date:** c. 1994

**Credit Line:** Gift from the Susan and Herbert Adler Collection

**Medium:** color intaglio on paper

**Dimensions:** (sight): 17 × 11 3/4 in. (43.2 × 29.8 cm)  
frame: 25 × 19 3/4 × 3/4 in. (63.5 × 50.2 × 1.9 cm)

**Classification:** PRINTS

**Object number:** M.  
2021.9.18



**Primary Maker:** Anonymous (Spanish)

**Nationality:** Spanish  
**Adoration of the Shepherds**

**Date:** early 16th century

**Credit Line:** Gift of George Alfred Cluett, Class of 1896

**Medium:** Oil and tempera on panel

**Dimensions:** frame: 63 3/8 × 48 1/16 in. (161 × 122 cm)

**Classification:** PAINTING

**Object number:** 53.28



**Primary Maker:** Joan Miro

**Nationality:** Spanish  
**L'Aigle et La Femme La Nuit** (Eagle and Woman in the Night)

**Date:** 1938

**Credit Line:** Gift of Madeleine P. and Harvey R. Plonsker, Class of 1961

**Medium:** etching and aquatint

**Dimensions:** image: 9 × 11 1/2 in. (22.9 × 29.2 cm)  
frame: 17 1/2 × 20 in. (44.5 × 50.8 cm)

**Classification:** PRINTS

**Object number:** M.  
2015.25.12



**Primary Maker:** Francisco José de Goya y Lucientes

**Nationality:** Spanish  
**Al cemeterio** (from "Los Desastres de la Guerra")

**Date:** published 1863

**Credit Line:** Museum purchase, John B. Turner '24 Memorial Fund

**Medium:** etching, drypoint, engraving and aquatint on paper

**Dimensions:** sheet: 9 5/8 × 13 9/16 in. (24.4 × 34.4 cm)

**Classification:** PRINTS

**Object number:** M.  
2011.12.56



**Primary Maker:** Francisco José de Goya y Lucientes

**Nationality:** Spanish  
**Algun partido saca** (from "Los Desastres de la Guerra")

**Date:** published 1863

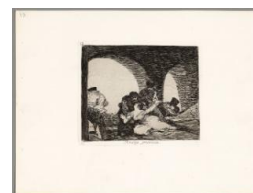
**Credit Line:** Museum purchase, John B. Turner '24 Memorial Fund

**Medium:** etching, drypoint, engraving and aquatint on paper

**Dimensions:** sheet: 9 5/8 × 13 9/16 in. (24.4 × 34.4 cm)

**Classification:** PRINTS

**Object number:** M.  
2011.12.40



**Primary Maker:** Francisco José de Goya y Lucientes

**Nationality:** Spanish  
**Amarga presencia** (from "Los Desastres de la Guerra")

**Date:** published 1863

**Credit Line:** Museum purchase, John B. Turner '24 Memorial Fund

**Medium:** etching, drypoint, engraving and aquatint on paper

**Dimensions:** sheet: 9 5/8 × 13 9/16 in. (24.4 × 34.4 cm)

**Classification:** PRINTS

**Object number:** M.  
2011.12.13



**Primary Maker:**  
**attributed to José**  
**Moreno**

**Nationality:** Spanish  
Annunciation

**Date:** 1660-70

**Credit Line:** Gift of George  
Alfred Cluett, Class of 1896

**Medium:** oil on canvas

**Dimensions:** frame: 63 1/2  
x 79 1/4 x 4 1/2 in. (161.3  
x 201.3 x 11.4 cm)

**Classification:** PAINTING

**Object number:** 54.1