

Basic Report



Primary Maker:
Thomas Hart Benton
Nationality: American
Back from the Fields
Date: 1945
Credit Line: Gift of David P. Tunick, Class of 1966
Medium: lithograph on paper
Dimensions: sheet: 12 1/16 x 15 15/16 in. (30.6 x 40.5 cm) image: 9 11/16 x 12 13/16 in. (24.6 x 32.6 cm)
Classification: PRINTS
Object number: 99.16.7



Primary Maker:
Thomas Hart Benton
Nationality: American
A Drink of Water
Date: 1937
Credit Line: Gift of David P. Tunick, Class of 1966
Medium: lithograph on paper
Dimensions: mat: 15 15/16 x 20 1/16 in. (40.5 x 50.9 cm) sheet: 11 15/16 x 16 in. (30.4 x 40.7 cm) image: 10 1/16 x 14 7/16 in. (25.5 x 36.7 cm)
Classification: PRINTS
Object number: 99.16.8



Primary Maker:
Thomas Hart Benton
Nationality: American
Edge of Town
Date: 1938
Credit Line: Gift of Karl E. Weston, Class of 1896
Medium: lithograph on paper
Dimensions: sheet: 11 13/16 x 14 3/8 in. (30 x 36.5 cm) plate: 9 3/4 x 11 1/4 in. (24.8 x 28.5 cm)
Classification: PRINTS
Object number: 38.12



Primary Maker:
Thomas Hart Benton
Nationality: American
Frankie and Johnnie
Date: 1936
Credit Line: Anonymous gift
Medium: lithograph on paper
Dimensions: sheet: 18 3/4 x 23 11/16 in. (47.7 x 60.2 cm) image: 16 5/16 x 22 1/4 in. (41.4 x 56.5 cm)
Classification: PRINTS
Object number: 91.23.1



Primary Maker:
Thomas Hart Benton
Nationality: American
Homecoming--Kaw Valley
Date: 1951
Credit Line: Gift of David Tunick, Class of 1966
Medium: lithograph on paper
Dimensions: sheet: 13 15/16 x 15 3/4 in. (35.4 x 40 cm) image: 11 9/16 in. (29.4 cm) plate: 14 5/8 in. (37.2 cm)
Classification: PRINTS
Object number: 84.31.9



Primary Maker:
Thomas Hart Benton
Nationality: American
Huck Finn
Date: 1936
Credit Line: Anonymous gift
Medium: lithograph on paper
Dimensions: sheet: 18 13/16 x 23 9/16 in. (47.8 x 59.8 cm) image: 16 7/16 x 21 9/16 in. (41.7 x 54.8 cm)
Classification: PRINTS
Object number: 91.23.2



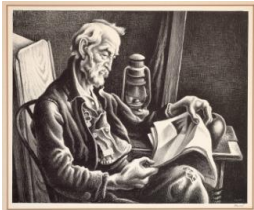
Primary Maker:
Thomas Hart Benton
Nationality: American
Island Hay
Date: 1945
Credit Line: Gift of Dr. and
Mrs. Gifford M. Lloyd
Medium: lithograph on
paper
Dimensions: sheet: 12 1/16
x 16 in. (30.7 x 40.7 cm)
image: 9 15/16 x 12 5/8 in.
(25.2 x 32 cm)
Classification: PRINTS
Object number: 78.30.18



Primary Maker:
Thomas Hart Benton
Nationality: American
Jesse James
Date: 1936
Credit Line: Anonymous gift
Medium: lithograph on
paper
Dimensions: image: 16 1/4
x 21 7/8 in. (41.2 x 55.5
cm) sheet: 18 7/8 x 23 5/8
in. (48 x 60 cm)
Classification: PRINTS
Object number: 91.23.3



Primary Maker:
Thomas Hart Benton
Nationality: American
Loading Corn
Date: 1945
Credit Line: Gift of David P.
Tunick, Class of 1966
Medium: lithograph on
paper
Dimensions: sheet: 12 x 15
15/16 in. (30.5 x 40.5 cm)
image: 9 9/16 x 12 13/16
in. (24.3 x 32.5 cm)
Classification: PRINTS
Object number: 99.16.9



Primary Maker:
Thomas Hart Benton
Nationality: American
Old Man Reading
Date: ca. 1945
Credit Line: Gift of Susan
and Stuart Crampton, Class
of 1958
Medium: lithograph
Dimensions: plate: 10 x 12
1/4 in. (25.4 x 31.1 cm)
frame: 16 3/4 x 20 3/4 in.
(42.5 x 52.7 cm)
Classification: PRINTS
Object number: M.
2003.17.1