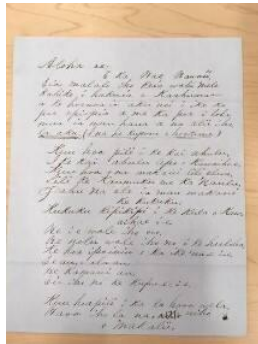


# Basic Report



"Aloha ae: E ka Hae Hawaii" / Pauoa

**Date:** 1860

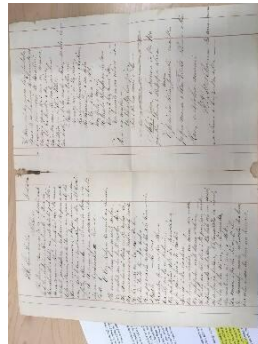
**Credit Line:** Williams College Archives and Special Collections

**Medium:** paper

**Dimensions:** Closed: 7 13/16 × 9 13/16 in. (19.8 × 24.9 cm) Open: 15 9/16 × 9 13/16 in. (39.5 × 24.9 cm)

**Classification:** WCMA exhibition loan

**Object number:** TL. 2018.36.14



"Aloha oe, Ke hoouana aku nei au iaoe, i kekahi mele"

**Date:** 1860

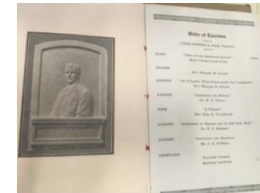
**Credit Line:** Williams College Archives and Special Collections

**Medium:** paper

**Dimensions:** Closed: 8 1/8 × 13 1/16 in. (20.6 × 33.2 cm) Open: 16 3/8 × 13 1/16 in. (41.6 × 33.2 cm)

**Classification:** WCMA exhibition loan

**Object number:** TL. 2018.36.16



**Primary Maker:** Maker Unknown

Dedication of the General Samuel Chapman Armstrong Memorial, Pauahi Hall, Oahu College  
**Date:** 1913

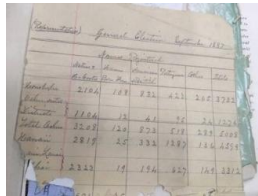
**Credit Line:** Williams College Archives and Special Collections

**Medium:** paper

**Dimensions:** 12 1/16 × 9 1/16 in. (30.6 × 23 cm)

**Classification:** WCMA exhibition loan

**Object number:** TL. 2018.36.48



**Primary Maker:** Maker Unknown

Election Scraps

**Date:** 1887

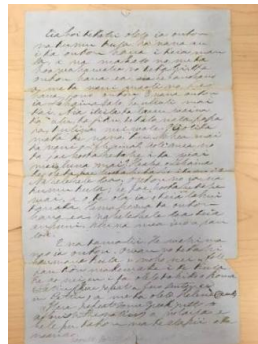
**Credit Line:** Williams College Archives and Special Collections

**Medium:** paper

**Dimensions:** 6 15/16 × 6 3/8 in. (17.6 × 16.2 cm)

**Classification:** WCMA exhibition loan

**Object number:** TL. 2018.36.47



"E nā mākuā a me nā kumu a me nā haumāna"

**Date:** 1860

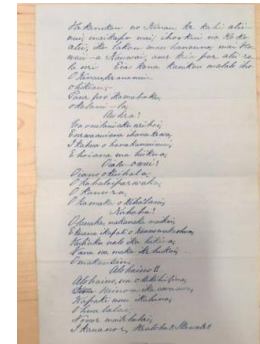
**Credit Line:** Williams College Archives and Special Collections

**Medium:** paper

**Dimensions:** Closed: 7 13/16 × 12 5/8 in. (19.8 × 32.1 cm) Open: 15 5/8 × 12 5/8 in. (39.7 × 32.1 cm)

**Classification:** WCMA exhibition loan

**Object number:** TL. 2018.36.17



**Primary Maker:** Maker Unknown

"He kanikau no Kina'u, kekahi alii" / Kohala

**Date:** 1860

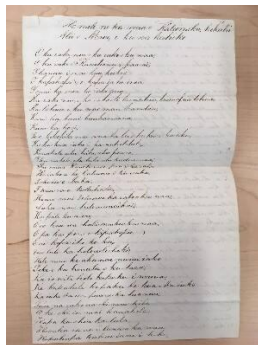
**Credit Line:** Williams College Archives and Special Collections

**Medium:** paper

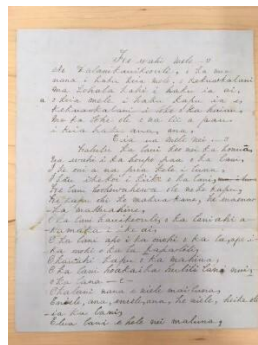
**Dimensions:** Closed: 7 3/8 × 11 7/8 in. (18.7 × 30.2 cm) Open: 14 13/16 × 11 7/8 in. (37.6 × 30.2 cm)

**Classification:** WCMA exhibition loan

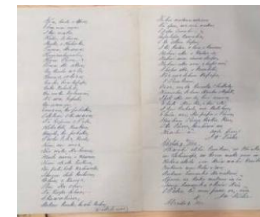
**Object number:** TL. 2018.36.12



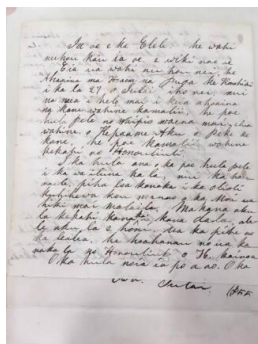
"He mele no ka waa o  
Kaleimoku, kekahi" /  
Waiakane  
**Date:** 1860  
**Credit Line:** Williams  
College Archives and  
Special Collections  
**Medium:** paper  
**Dimensions:** Closed: 7 13  
/16 × 12 3/8 in. (19.8 ×  
31.4 cm) Open: 15 9/16 ×  
12 3/8 in. (39.5 × 31.4 cm)  
**Classification:** WCMA  
exhibition loan  
**Object number:** TL.  
2018.36.15



"He Wahi Mele!!"  
**Date:** 1860  
**Credit Line:** Williams  
College Archives and  
Special Collections  
**Medium:** paper  
**Dimensions:** Closed: 7 13  
/16 × 9 13/16 in. (19.8 ×  
24.9 cm) Open: 15 5/8 × 9  
13/16 in. (39.7 × 24.9 cm)  
**Classification:** WCMA  
exhibition loan  
**Object number:** TL.  
2018.36.19



"Hulihia, Kilauea"  
**Date:** 1860  
**Credit Line:** Williams  
College Archives and  
Special Collections  
**Medium:** paper  
**Dimensions:** Closed: 7 3/8  
× 11 7/8 in. (18.7 × 30.2  
cm) Open: 14 3/4 × 11 7/8  
in. (37.5 × 30.2 cm)  
**Classification:** WCMA  
exhibition loan  
**Object number:** TL.  
2018.36.13



**Primary Maker:** Maker  
Unknown  
"Ia oi e ka Elele. He wahi" /  
Ewa  
**Date:** 1855  
**Credit Line:** Williams  
College Archives and  
Special Collections  
**Medium:** paper  
**Dimensions:** Closed: 7 5/16  
× 10 13/16 in. (18.6 × 27.5  
cm) Open: 14 1/2 × 10 13  
/16 in. (36.8 × 27.5 cm)  
**Classification:** WCMA  
exhibition loan  
**Object number:** TL.  
2018.36.10