

Basic Report



Primary Maker: West African

Woven Ware (basket tray?)

Date: late 20th century

Credit Line: Gift of Drs. Carolyn and Eli Newberger

Medium: dyed vegetal fibers

Dimensions: diameter: 16 in. (40.6 cm); thickness: 1/4 in. (0.6 cm)

Classification: WCMA Reserve Collection

Object number: RC.83.246



Primary Maker: West African

Woven Ware (basket tray?)

Date: late 20th century

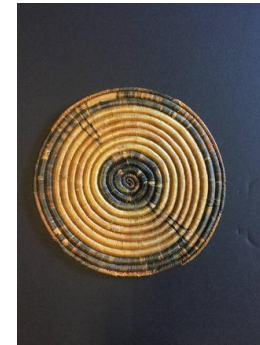
Credit Line: Gift of Drs. Carolyn and Eli Newberger

Medium: dyed vegetal fibers

Dimensions: diameter: 11 1/2 in. (29.2 cm); thickness: 1/4 in. (0.6 cm)

Classification: WCMA Reserve Collection

Object number: RC.83.226



Primary Maker: West African

Woven Ware (basket tray?)

Date: late 20th century

Credit Line: Gift of Drs. Carolyn and Eli Newberger

Medium: dyed vegetal fibers

Dimensions: diameter: 8 1/2 in. (21.6 cm); thickness: 1/4 in. (0.6 cm)

Classification: WCMA Reserve Collection

Object number: RC.83.227



Primary Maker: West African

Woven Ware (basket tray?)

Date: late 20th century

Credit Line: Gift of Drs. Carolyn and Eli Newberger

Medium: dyed vegetal fibers

Dimensions: diameter: 11 1/2 in. (29.2 cm); thickness: 1/4 in. (0.6 cm)

Classification: WCMA Reserve Collection

Object number: RC.83.228



Primary Maker: West African

Woven Ware (basket tray?)

Date: late 20th century

Credit Line: Gift of Drs. Carolyn and Eli Newberger

Medium: dyed vegetal fibers

Dimensions: diameter: 13 3/4 in. (34.9 cm); thickness: 1/4 in. (0.6 cm)

Classification: WCMA Reserve Collection

Object number: RC.83.229



Primary Maker: West African

Woven Ware (basket tray?)

Date: late 20th century

Credit Line: Gift of Drs. Carolyn and Eli Newberger

Medium: dyed vegetal fibers

Dimensions: diameter: 14 1/4 in. (36.2 cm); thickness: 1/4 in. (0.6 cm)

Classification: WCMA Reserve Collection

Object number: RC.83.230



Primary Maker: West African

Woven Ware (basket tray?)

Date: late 20th century

Credit Line: Gift of Drs. Carolyn and Eli Newberger

Medium: dyed vegetal fibers

Dimensions: diameter: 15 1/2 in. (39.4 cm); thickness: 1/4 in. (0.6 cm)

Classification: WCMA Reserve Collection

Object number: RC.83.231



Primary Maker: West African

Woven Ware (basket tray?)

Date: late 20th century

Credit Line: Gift of Drs. Carolyn and Eli Newberger

Medium: dyed vegetal fibers

Dimensions: diameter: 15 1/4 in. (38.7 cm); thickness: 1/4 in. (0.6 cm)

Classification: WCMA Reserve Collection

Object number: RC.83.232



Primary Maker: West African

Woven Ware (basket tray?)

Date: late 20th century

Credit Line: Gift of Drs. Carolyn and Eli Newberger

Medium: dyed vegetal fibers

Dimensions: diameter: 15 1/2 in. (39.4 cm); thickness: 1/4 in. (0.6 cm)

Classification: WCMA Reserve Collection

Object number: RC.83.233



Primary Maker: West African

Woven Ware (basket tray?)

Date: late 20th century

Credit Line: Gift of Drs. Carolyn and Eli Newberger

Medium: dyed vegetal fibers

Dimensions: diameter: 15 1/4 in. (38.7 cm); thickness: 1/4 in. (0.6 cm)

Classification: WCMA Reserve Collection

Object number: RC.83.234