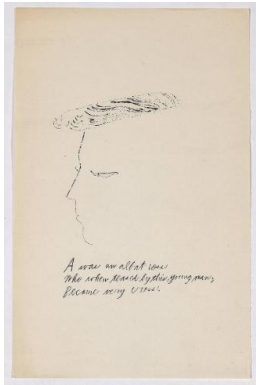


# Basic Report



**Primary Maker:** Andy Warhol

**Nationality:** American  
"A Is An Alphabet" [New York, 1953]. Page 1 of 26 unbound pages, laid into Warhol's labeled wrappers, litho-offset.

**Date:** 1953

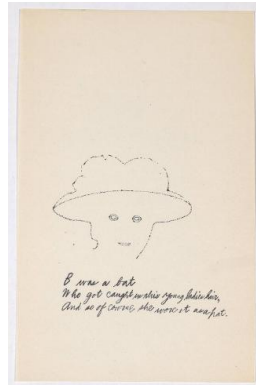
**Credit Line:** Gift of Richard F. Holmes, Class of 1946

**Medium:** blotted ink line drawing on paper

**Dimensions:** Overall: 9 7/16 x 6 in. (24 x 15.2 cm)  
fitted box: 10" H x 6 3/4" W x 1 1/4" D

**Classification:** DEC ARTS

**Object number:** 95.18.2.A



**Primary Maker:** Andy Warhol

**Nationality:** American  
"A Is An Alphabet" [New York, 1953]. Page 2 of 26 unbound pages, laid into Warhol's labeled wrappers, litho-offset.

**Date:** 1953

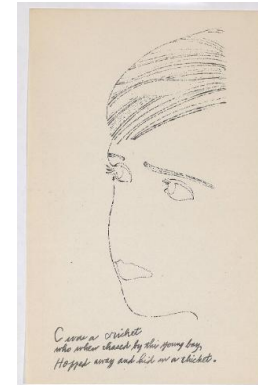
**Credit Line:** Gift of Richard F. Holmes, Class of 1946

**Medium:** blotted ink line drawing on paper

**Dimensions:** Overall: 9 7/16 x 6 in. (24 x 15.2 cm)  
fitted box: 10" H x 6 3/4" W x 1 1/4" D

**Classification:** DEC ARTS

**Object number:** 95.18.2.B



**Primary Maker:** Andy Warhol

**Nationality:** American  
"A Is An Alphabet" [New York, 1953]. Page 3 of 26 unbound pages, laid into Warhol's labeled wrappers, litho-offset.

**Date:** 1953

**Credit Line:** Gift of Richard F. Holmes, Class of 1946

**Medium:** blotted ink line drawing on paper

**Dimensions:** Overall: 9 7/16 x 6 in. (24 x 15.2 cm)  
fitted box: 10" H x 6 3/4" W x 1 1/4" D

**Classification:** DEC ARTS

**Object number:** 95.18.2.C



**Primary Maker:** Andy Warhol

**Nationality:** American  
"A Is An Alphabet" [New York, 1953]. Page 4 of 26 unbound pages, laid into Warhol's labeled wrappers, litho-offset.

**Date:** 1953

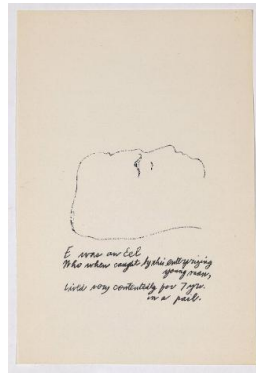
**Credit Line:** Gift of Richard F. Holmes, Class of 1946

**Medium:** blotted ink line drawing on paper

**Dimensions:** Overall: 9 7/16 x 6 in. (24 x 15.2 cm)  
fitted box: 10" H x 6 3/4" W x 1 1/4" D

**Classification:** DEC ARTS

**Object number:** 95.18.2.D



**Primary Maker:** Andy Warhol

**Nationality:** American  
"A Is An Alphabet" [New York, 1953]. Page 5 of 26 unbound pages, laid into Warhol's labeled wrappers, litho-offset.

**Date:** 1953

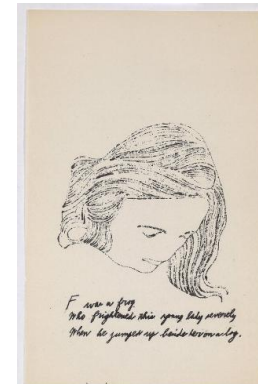
**Credit Line:** Gift of Richard F. Holmes, Class of 1946

**Medium:** blotted ink line drawing on paper

**Dimensions:** Overall: 9 7/16 x 6 in. (24 x 15.2 cm)  
fitted box: 10" H x 6 3/4" W x 1 1/4" D

**Classification:** DEC ARTS

**Object number:** 95.18.2.E



**Primary Maker:** Andy Warhol

**Nationality:** American  
"A Is An Alphabet" [New York, 1953]. Page 6 of 26 unbound pages, laid into Warhol's labeled wrappers, litho-offset.

**Date:** 1953

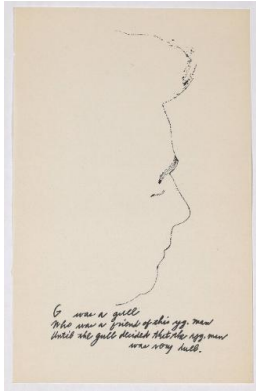
**Credit Line:** Gift of Richard F. Holmes, Class of 1946

**Medium:** blotted ink line drawing on paper

**Dimensions:** Overall: 9 7/16 x 6 in. (24 x 15.2 cm)  
fitted box: 10" H x 6 3/4" W x 1 1/4" D

**Classification:** DEC ARTS

**Object number:** 95.18.2.F



**Primary Maker: Andy Warhol**

**Nationality:** American  
"A Is An Alphabet" [New York, 1953]. Page 7 of 26 unbound pages, laid into Warhol's labeled wrappers, litho-offset.

**Date:** 1953

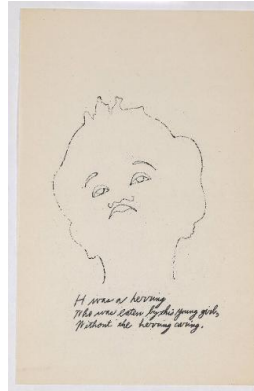
**Credit Line:** Gift of Richard F. Holmes, Class of 1946

**Medium:** blotted ink line drawing on paper

**Dimensions:** Overall: 9 7/16 x 6 in. (24 x 15.2 cm)  
fitted box: 10" H x 6 3/4" W x 1 1/4" D

**Classification:** DEC ARTS

**Object number:** 95.18.2.G



**Primary Maker: Andy Warhol**

**Nationality:** American  
"A Is An Alphabet" [New York, 1953]. Page 8 of 26 unbound pages, laid into Warhol's labeled wrappers, litho-offset.

**Date:** 1953

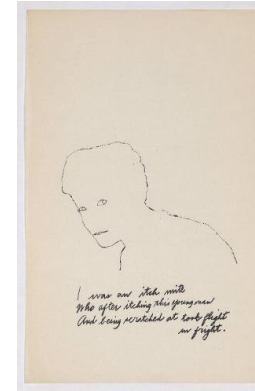
**Credit Line:** Gift of Richard F. Holmes, Class of 1946

**Medium:** blotted ink line drawing on paper

**Dimensions:** Overall: 9 7/16 x 6 in. (24 x 15.2 cm)  
fitted box: 10" H x 6 3/4" W x 1 1/4" D

**Classification:** DEC ARTS

**Object number:** 95.18.2.H



**Primary Maker: Andy Warhol**

**Nationality:** American  
"A Is An Alphabet" [New York, 1953]. Page 9 of 26 unbound pages, laid into Warhol's labeled wrappers, litho-offset.

**Date:** 1953

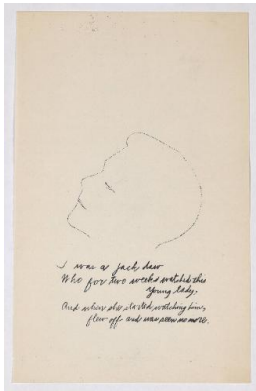
**Credit Line:** Gift of Richard F. Holmes, Class of 1946

**Medium:** blotted ink line drawing on paper

**Dimensions:** Overall: 9 7/16 x 6 in. (24 x 15.2 cm)  
fitted box: 10" H x 6 3/4" W x 1 1/4" D

**Classification:** DEC ARTS

**Object number:** 95.18.2.I



**Primary Maker: Andy Warhol**

**Nationality:** American  
"A Is An Alphabet" [New York, 1953]. Page 10 of 26 unbound pages, laid into Warhol's labeled wrappers, litho-offset.

**Date:** 1953

**Credit Line:** Gift of Richard F. Holmes, Class of 1946

**Medium:** blotted ink line drawing on paper

**Dimensions:** Overall: 9 7/16 x 6 in. (24 x 15.2 cm)  
fitted box: 10" H x 6 3/4" W x 1 1/4" D

**Classification:** DEC ARTS

**Object number:** 95.18.2.J