

# Basic Report

---



**Primary Maker: Ch'eng Wu-kang**

**Nationality:** Chinese  
Branches with fruit

**Date:** no date

**Credit Line:** Selection from the Peterson Collection, Gift of William Bingham II

**Medium:** painting on silk

**Dimensions:** image: 11 3/4 x 17 1/16 in. (29.8 x 43.3 cm) Overall: 13 1/8 x 19 1/8 in. (33.4 x 48.5 cm)

**Classification:** EASTERN

**Object number:** 41.15.52



**Primary Maker: Lu Chih**

**Nationality:** Chinese

Cranes in a Landscape

**Date:** 19th century?

**Credit Line:** Selection from the Peterson Collection, Gift of William Bingham II

**Medium:** painting on silk

**Dimensions:** image: 10 1/2 x 11 7/8 in. (26.7 x 30.2 cm) Overall: 11 13/16 x 14 3/16 in. (30 x 36 cm)

**Classification:** EASTERN

**Object number:** 41.15.44



**Primary Maker: Lu Chih**

**Nationality:** Chinese

Cranes in the Landscape

**Date:** 19th century?

**Credit Line:** Selection from the Peterson Collection, Gift of William Bingham II

**Medium:** painting on silk

**Dimensions:** image: 10 1/2 x 12 1/16 in. (26.7 x 30.6 cm) Overall: 11 7/8 x 14 3/16 in. (30.1 x 36 cm)

**Classification:** EASTERN

**Object number:** 41.15.43



**Primary Maker: Ch'eng Wu-kang**

**Nationality:** Chinese  
Crow

**Date:** no date

**Credit Line:** Selection from the Peterson Collection, Gift of William Bingham II

**Medium:** painting on silk

**Dimensions:** image: 11 3/4 x 16 15/16 in. (29.9 x 43 cm) Overall: 13 1/8 x 19 3/16 in. (33.4 x 48.7 cm)

**Classification:** EASTERN

**Object number:** 41.15.53



**Primary Maker: Huang Binhong**

**Nationality:** Chinese

Flowers in the Style of Li Liu-fang (from three album leaves)

**Date:** no date

**Credit Line:** Gift of Tao Ho, Class of 1960

**Medium:** ink and color on paper

**Dimensions:** Overall: 12 1/2 x 8 in. (31.8 x 20.3 cm)

**Classification:** EASTERN

**Object number:** M. 2002.17.3.A



**Primary Maker: Huang Binhong**

**Nationality:** Chinese

Landscape (from album of four leaves)

**Date:** no date

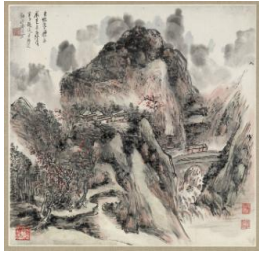
**Credit Line:** Gift of Tao Ho, Class of 1960

**Medium:** ink and color on paper

**Dimensions:** Overall: 13 3/4 x 13 1/4 in. (34.9 x 33.7 cm)

**Classification:** EASTERN

**Object number:** M. 2002.17.1.C



**Primary Maker: Huang Binhong**

**Nationality:** Chinese  
Landscape (from album of four leaves)

**Date:** no date

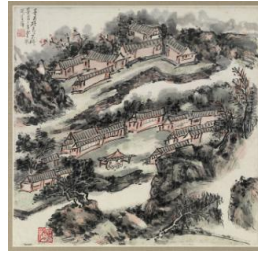
**Credit Line:** Gift of Tao Ho, Class of 1960

**Medium:** ink and color on paper

**Dimensions:** Overall: 13 3/4 x 13 1/4 in. (34.9 x 33.7 cm)

**Classification:** EASTERN

**Object number:** M. 2002.17.1.D



**Primary Maker: Huang Binhong**

**Nationality:** Chinese  
Landscape (from album of four leaves)

**Date:** no date

**Credit Line:** Gift of Tao Ho, Class of 1960

**Medium:** ink and color on paper

**Dimensions:** Overall: 13 3/4 x 13 1/4 in. (34.9 x 33.7 cm)

**Classification:** EASTERN

**Object number:** M. 2002.17.1.A



**Primary Maker: Huang Binhong**

**Nationality:** Chinese  
Landscape (from album of four leaves)

**Date:** no date

**Credit Line:** Gift of Tao Ho, Class of 1960

**Medium:** ink and color on paper

**Dimensions:** Overall: 13 3/4 x 13 1/4 in. (34.9 x 33.7 cm)

**Classification:** EASTERN

**Object number:** M. 2002.17.1.B



**Primary Maker: Sung Yuan**

**Nationality:** Chinese  
Landscape with figures

**Date:** no date

**Credit Line:** Selection from the Peterson Collection, Gift of William Bingham II

**Medium:** painting on silk

**Dimensions:** image: 11 13/16 x 16 15/16 in. (30 x 43.1 cm) Overall: 13 1/8 x 19 1/8 in. (33.4 x 48.6 cm)

**Classification:** EASTERN

**Object number:** 41.15.54