

Basic Report



Primary Maker: Benton
Murdoch Spruance

Nationality: American
Dark Bed (Study for lithograph)

Date: c. 1961

Credit Line: Gift of
Sigmund R. Balka, Class of
1956, and Elinor B. Balka

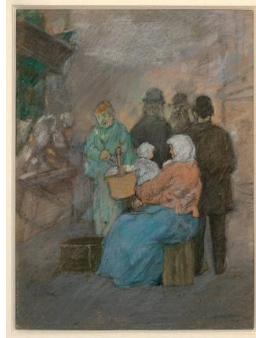
Medium: pastel

Dimensions: frame: 25 3/4
x 35 in. (65.4 x 88.9 cm)
image: 18 1/2 x 27 3/4 in.
(47 x 70.5 cm)

Classification: WCMA

Reserve Collection

Object number: RC.89.146



Primary Maker: Jerome
Myers

Nationality: American
Lower East Side

Date: 1935

Credit Line: Gift of
Raymond J. and Margaret
Horowitz

Medium: pastel

Dimensions: Overall: 12 1
/2 x 9 1/2 in. (31.8 x 24.1
cm)

Classification: DRAWING

Object number: M.2007.14



Primary Maker: Jim
Schantz

Nationality: American
**September Dusk,
Housatonic Reflection**

Date: 2003

Credit Line: Gift of Bernie
and Sue Pucker in honor of
Jo Silipo, Class of 1979 and
Laurie Thomsen, Class of
1979

Medium: pastel

Dimensions: Overall: 47 1
/2 x 36 in. (120.7 x 91.4
cm) frame: 56 x 43 3/4 x 2
5/8 in. (142.2 x 111.1 x 6.7
cm)

Classification: WCMA

Reserve Collection

Object number: RC.64