

# Basic Report



**Primary Maker:** Tomie Arai

**Nationality:** American  
Fathers and Sons (from "Momotaro/Peach Boy")

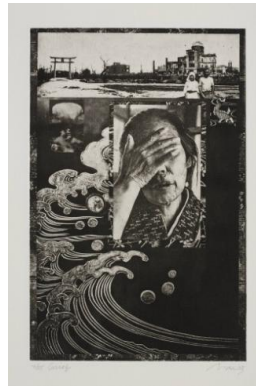
**Date:** 2003

**Credit Line:** Museum purchase, Kathryn Hurd Fund

**Medium:** intaglio on paper  
**Dimensions:** plate: 9 3/4 x 6 3/8 in. (24.8 x 16.2 cm)  
sheet: 15 x 11 in. (38.1 x 27.9 cm)

**Classification:** PRINTS

**Object number:** M.2003.19.D



**Primary Maker:** Tomie Arai

**Nationality:** American  
Grief (from "Momotaro /Peach Boy")

**Date:** 2003

**Credit Line:** Museum purchase, Kathryn Hurd Fund

**Medium:** intaglio on paper  
**Dimensions:** plate: 9 3/4 x 6 3/8 in. (24.8 x 16.2 cm)  
sheet: 15 x 11 in. (38.1 x 27.9 cm)

**Classification:** PRINTS

**Object number:** M.2003.19.A



**Primary Maker:** Edward Porter

**Nationality:** American  
Harvest

**Date:** 1968

**Credit Line:** Gift of Dorothy D. and Frederick Rudolph

**Medium:** intaglio on paper  
**Dimensions:** image: 23 1/4 x 18 7/8 in. (59 x 48 cm)  
frame: 28 3/8 x 22 7/16 in. (72 x 57 cm)

**Classification:** WCMA Reserve Collection

**Object number:** RC.3.19



**Primary Maker:** Tomie Arai

**Nationality:** American  
Hope (from "Momotaro /Peach Boy")

**Date:** 2003

**Credit Line:** Museum purchase, Kathryn Hurd Fund

**Medium:** intaglio on paper  
**Dimensions:** plate: 9 3/4 x 6 3/8 in. (24.8 x 16.2 cm)  
sheet: 15 x 11 in. (38.1 x 27.9 cm)

**Classification:** PRINTS

**Object number:** M.2003.19.B



**Primary Maker:** Tomie Arai

**Nationality:** American  
Kaeru/Return (from "Momotaro/Peach Boy")

**Date:** 2003

**Credit Line:** Museum purchase, Kathryn Hurd Fund

**Medium:** intaglio on paper  
**Dimensions:** plate: 9 3/4 x 6 3/8 in. (24.8 x 16.2 cm)  
sheet: 15 x 11 in. (38.1 x 27.9 cm)

**Classification:** PRINTS

**Object number:** M.2003.19.I



**Primary Maker:** Tomie Arai

**Nationality:** American  
Peach Boy (from "Momotaro /Peach Boy")

**Date:** 2003

**Credit Line:** Museum purchase, Kathryn Hurd Fund

**Medium:** intaglio on paper  
**Dimensions:** plate: 9 3/4 x 6 3/8 in. (24.8 x 16.2 cm)  
sheet: 15 x 11 in. (38.1 x 27.9 cm)

**Classification:** PRINTS

**Object number:** M.2003.19.E



**Primary Maker: Tomie Arai**

**Nationality:** American  
Portrait of a Soldier (from "Momotaro/Peach Boy")

**Date:** 2003

**Credit Line:** Museum purchase, Kathryn Hurd Fund

**Medium:** intaglio on paper

**Dimensions:** plate: 9 3/4 x 6 3/8 in. (24.8 x 16.2 cm)  
sheet: 15 x 11 in. (38.1 x 27.9 cm)

**Classification:** PRINTS

**Object number:** M.2003.19.  
F



**Primary Maker: Tomie Arai**

**Nationality:** American  
Possibility (from "Momotaro/Peach Boy")

**Date:** 2003

**Credit Line:** Museum purchase, Kathryn Hurd Fund

**Medium:** intaglio on paper

**Dimensions:** plate: 9 3/4 x 6 3/8 in. (24.8 x 16.2 cm)  
sheet: 15 x 11 in. (38.1 x 27.9 cm)

**Classification:** PRINTS

**Object number:** M.2003.19.  
C



**Primary Maker: Tomie Arai**

**Nationality:** American  
Sailing Away (from "Momotaro/Peach Boy")

**Date:** 2003

**Credit Line:** Museum purchase, Kathryn Hurd Fund

**Medium:** intaglio on paper

**Dimensions:** plate: 9 3/4 x 6 3/8 in. (24.8 x 16.2 cm)  
sheet: 15 x 11 in. (38.1 x 27.9 cm)

**Classification:** PRINTS

**Object number:** M.2003.19.  
G



**Primary Maker: Tomie Arai**

**Nationality:** American  
Tests of Strength (from "Momotaro/Peach Boy")

**Date:** 2003

**Credit Line:** Museum purchase, Kathryn Hurd Fund

**Medium:** intaglio on paper

**Dimensions:** plate: 9 3/4 x 6 3/8 in. (24.8 x 16.2 cm)  
sheet: 15 x 11 in. (38.1 x 27.9 cm)

**Classification:** PRINTS

**Object number:** M.2003.19.  
H