

Basic Report



Primary Maker:
Orovida Camille Pissarro
Nationality: British
The Ambush
Date: 1938
Credit Line: Gift of Milton C. Rose, Class of 1927
Medium: etching and aquatint on paper
Dimensions: sheet: 10 5/16 x 15 1/2 in. (26.2 x 39.4 cm) plate: 6 3/4 x 10 13/16 in. (17.2 x 27.4 cm)
Classification: PRINTS
Object number: 81.31.67



Primary Maker:
Leonard Baskin
Nationality: American
Apple Branch
Date: c. 1962
Credit Line: Gift of Julius S. Held
Medium: etching and aquatint on paper
Dimensions: sheet: 22 1/16 x 27 9/16 in. (56 x 70 cm) image: 13 3/8 x 17 5/8 in. (33.9 x 44.7 cm)
Classification: PRINTS
Object number: 78.39.5



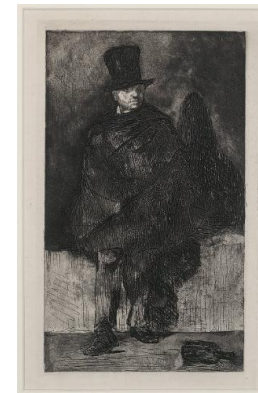
Primary Maker:
Francisco José de Goya y Lucientes
Nationality: Spanish
Aquellos Polbos (from "Los Caprichos")
Date: 1799
Credit Line: Museum purchase, Joseph O. Eaton Fund
Medium: etching and aquatint on paper
Dimensions: sheet: 12 1/8 x 7 11/16 in. (30.8 x 19.5 cm) sheet1: 8 1/2 x 5 13/16 in. (21.6 x 14.8 cm)
Classification: PRINTS
Object number: 59.14



Primary Maker: William Sharp (20th c.)
Nationality: American
Art Fair
Date: no date
Credit Line: Gift of David P. Tunick, Class of 1966
Medium: etching and aquatint on paper
Dimensions: sheet: 14 x 12 7/16 in. (35.6 x 31.6 cm) plate: 10 15/16 x 8 13/16 in. (27.8 x 22.4 cm)
Classification: PRINTS
Object number: 99.16.39



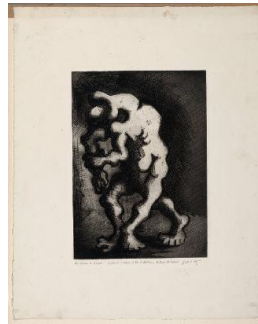
Primary Maker: Craig Dennis
Nationality: American
Body Systems Map V: My Body as an Antenna
Date: 1982
Credit Line: Museum purchase, Kathryn Hurd Fund
Medium: etching and aquatint on paper
Dimensions: sheet: 41 7/8 x 29 1/16 in. (106.3 x 73.8 cm) image: 35 7/16 x 23 11/16 in. (90 x 60.2 cm)
Classification: PRINTS
Object number: 85.9



Primary Maker:
Edouard Manet
Nationality: French
Le bouveur d'absinthe
Date: c. 1860
Credit Line: Gift of Sylvia Kennick Brown
Medium: etching and aquatint on paper
Dimensions: frame: 20 1/4 x 15 1/4 in. (51.4 x 38.7 cm) image: 9 3/4 x 5 3/4 in. (24.8 x 14.6 cm)
Classification: PRINTS
Object number: M.2014.9.2



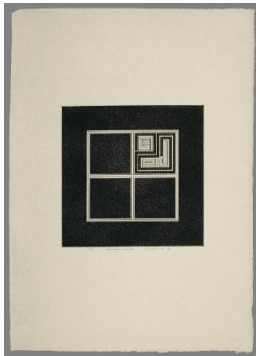
Primary Maker: Susan Aldworth
Nationality: British
Brainscape 24
Date: 2006
Credit Line: Gift of the artist
Medium: etching and aquatint on paper
Dimensions: plate: 11 3/4 x 9 3/4 in. (29.8 x 24.8 cm)
Classification: PRINTS
Object number: M.2010.5



Primary Maker: Jacques Lipchitz
Nationality: French
Le Chemin de l'exil
Date: no date
Credit Line: Bequest of Jane T. Ritchie
Medium: etching and aquatint on paper
Dimensions: sheet: 22 13/16 x 18 1/16 in. (58 x 45.8 cm) plate: 13 3/4 x 9 7/8 in. (35 x 25.1 cm)
Classification: PRINTS
Object number: 85.24.50



Primary Maker: Georges Rouault
Nationality: French
Clown au Timbale-- "Le Cirque"
Date: 1930
Credit Line: Gift of J. Jeffrey Shedd, Class of 1925
Medium: etching and aquatint on paper
Dimensions: sheet: 17 1/2 x 13 3/8 in. (44.5 x 34 cm) plate: 12 5/16 x 8 3/8 in. (31.2 x 21.3 cm)
Classification: PRINTS
Object number: 77.61



Primary Maker: Gordon House
Nationality: British
Cornered Circuit
Date: 1970
Credit Line: Gift of Mark T. Jacobson
Medium: etching and aquatint on paper
Dimensions: sheet: 23 5/8 x 13 3/8 in. (60 x 34 cm) plate: 9 13/16 x 9 13/16 in. (24.9 x 25 cm)
Classification: PRINTS
Object number: 85.41.1