

Basic Report



Primary Maker: Mossi
Cultural Group
Nationality: Burkina Faso,
West Africa
Basket
Date: mid/late 20th century
Credit Line: Gift of Drs.
Carolyn and Eli Newberger
Medium: dyed vegetal
fibers
Dimensions: diameter: 10 1
/2 in. (26.7 cm)
Classification: WCMA
Reserve Collection
Object number: RC.83.69



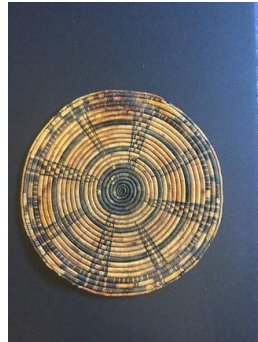
Primary Maker: West
African
Woven Ware (basket)
Date: late 20th century
Credit Line: Gift of Drs.
Carolyn and Eli Newberger
Medium: dyed vegetal
fibers
Dimensions: diameter: 13 1
/4 in. (33.7 cm); height: 4 1
/2 in. (11.4 cm)
Classification: WCMA
Reserve Collection
Object number: RC.83.224



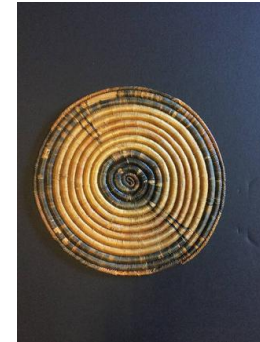
Primary Maker: West
African
Woven Ware (basket)
Date: late 20th century
Credit Line: Gift of Drs.
Carolyn and Eli Newberger
Medium: dyed vegetal
fibers
Dimensions: diameter: 15
in. (38.1 cm); height: 4 1/2
in. (11.4 cm)
Classification: WCMA
Reserve Collection
Object number: RC.83.225



Primary Maker: West
African
Woven Ware (basket tray?)
Date: late 20th century
Credit Line: Gift of Drs.
Carolyn and Eli Newberger
Medium: dyed vegetal
fibers
Dimensions: diameter: 16
in. (40.6 cm); thickness: 1
/4 in. (0.6 cm)
Classification: WCMA
Reserve Collection
Object number: RC.83.246



Primary Maker: West
African
Woven Ware (basket tray?)
Date: late 20th century
Credit Line: Gift of Drs.
Carolyn and Eli Newberger
Medium: dyed vegetal
fibers
Dimensions: diameter: 11 1
/2 in. (29.2 cm); thickness:
1/4 in. (0.6 cm)
Classification: WCMA
Reserve Collection
Object number: RC.83.226



Primary Maker: West
African
Woven Ware (basket tray?)
Date: late 20th century
Credit Line: Gift of Drs.
Carolyn and Eli Newberger
Medium: dyed vegetal
fibers
Dimensions: diameter: 8 1
/2 in. (21.6 cm); thickness:
1/4 in. (0.6 cm)
Classification: WCMA
Reserve Collection
Object number: RC.83.227



Primary Maker: West African

Woven Ware (basket tray?)

Date: late 20th century

Credit Line: Gift of Drs. Carolyn and Eli Newberger

Medium: dyed vegetal fibers

Dimensions: diameter: 11 1/2 in. (29.2 cm); thickness: 1/4 in. (0.6 cm)

Classification: WCMA Reserve Collection

Object number: RC.83.228



Primary Maker: West African

Woven Ware (basket tray?)

Date: late 20th century

Credit Line: Gift of Drs. Carolyn and Eli Newberger

Medium: dyed vegetal fibers

Dimensions: diameter: 13 3/4 in. (34.9 cm); thickness: 1/4 in. (0.6 cm)

Classification: WCMA Reserve Collection

Object number: RC.83.229



Primary Maker: West African

Woven Ware (basket tray?)

Date: late 20th century

Credit Line: Gift of Drs. Carolyn and Eli Newberger

Medium: dyed vegetal fibers

Dimensions: diameter: 14 1/4 in. (36.2 cm); thickness: 1/4 in. (0.6 cm)

Classification: WCMA Reserve Collection

Object number: RC.83.230



Primary Maker: West African

Woven Ware (basket tray?)

Date: late 20th century

Credit Line: Gift of Drs. Carolyn and Eli Newberger

Medium: dyed vegetal fibers

Dimensions: diameter: 15 1/2 in. (39.4 cm); thickness: 1/4 in. (0.6 cm)

Classification: WCMA Reserve Collection

Object number: RC.83.231