

# Basic Report

---

**Primary Maker:** Charles Wells

**Nationality:** American

Alban Berg

**Date:** 1966

**Credit Line:** Gift of Dorothy D. and Frederick Rudolph

**Medium:** drypoint etching on paper

**Dimensions:** Overall: 17 11/16 x 14 5/8 in. (45 x 37.2 cm) frame: 22 3/16 x 18 5/16 in. (56.3 x 46.5 cm)

**Classification:** WCMA

Reserve Collection

**Object number:** RC.3.26

**Primary Maker:** Charles Wells

**Nationality:** American

Childhood of a Leader

**Date:** 1967

**Credit Line:** Gift of Dorothy D. and Frederick Rudolph

**Medium:** drypoint etching on paper

**Dimensions:** Overall: 17 5/8 x 19 3/4 in. (44.8 x 50.2 cm) frame: 20 9/16 x 26 3/8 in. (52.2 x 67 cm)

**Classification:** WCMA

Reserve Collection

**Object number:** RC.3.36

**Primary Maker:** Margaret Anne Pace

**Nationality:** American

Dodd House

**Date:** 1975

**Credit Line:** Anonymous gift

**Medium:** drypoint etching on paper

**Dimensions:** frame: 33 1/2 x 26 1/2 in. (85.1 x 67.3 cm) plate: 24 1/2 x 17 1/2 in. (62.2 x 44.5 cm)

**Classification:** WCMA

Reserve Collection

**Object number:** RC.4.40



**Primary Maker:** Cadwallader Lincoln Washburn

**Nationality:** American

Ezekiel of Sciose

**Date:** no date

**Credit Line:** Found in the collection and catalogued, 1992

**Medium:** drypoint etching on paper

**Dimensions:** sheet: 12 15/16 x 9 3/4 in. (32.8 x 24.7 cm) plate: 11 3/16 x 7 13/16 in. (28.4 x 19.8 cm)

**Classification:** PRINTS

**Object number:** 92.5.103



**Primary Maker:** Catherine Catanzaro Koenig

**Nationality:** American

Ghost Sun

**Date:** no date

**Credit Line:** Bequest of Jane T. Ritchie

**Medium:** drypoint etching on paper

**Dimensions:** plate: 8 x 9 13/16 in. (20.3 x 25 cm) sheet: 9 1/2 x 12 5/8 in. (24.1 x 32 cm) image: 8 x 9 13/16 in. (20.3 x 25 cm)

**Classification:** PRINTS

**Object number:** 85.46.36



**Primary Maker:** Cadwallader Lincoln Washburn

**Nationality:** American

The Marsh

**Date:** 1926

**Credit Line:** Found in the collection and catalogued, 1992

**Medium:** drypoint etching on paper

**Dimensions:** sheet: 10 11/16 x 13 7/16 in. (27.1 x 34.2 cm) plate: 7 15/16 x 10 7/8 in. (20.2 x 27.7 cm)

**Classification:** PRINTS

**Object number:** 92.5.107



**Primary Maker:**  
**Auguste Delâtre**

**Nationality:** French  
Le Matin

**Date:** 1865

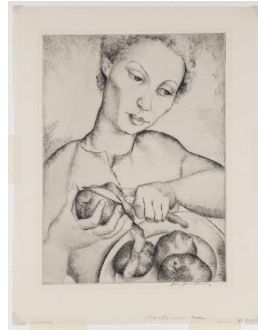
**Credit Line:** Bequest of  
John H. Maghee

**Medium:** drypoint etching  
on paper

**Dimensions:** sheet: 14 1/2  
x 22 1/16 in. (36.9 x 56  
cm) plate: 9 5/8 x 12 11/16  
in. (24.5 x 32.2 cm)

**Classification:** PRINTS

**Object number:** 37.2.99



**Primary Maker:** Luis  
**Quintanilla**

**Nationality:** Spanish  
Paulette

**Date:** 1939 or 1940

**Credit Line:** Gift of David P.  
Tunick, Class of 1966

**Medium:** drypoint etching  
on paper

**Dimensions:** sheet: 16 7/8  
x 13 1/8 in. (42.8 x 33.3  
cm) plate: 13 1/4 x 9 13/16  
in. (33.7 x 25 cm)

**Classification:** PRINTS

**Object number:** 99.16.36



**Primary Maker:** Ronald  
**B. Kitaj**

**Nationality:** American  
Robert Duncan

**Date:** 1971

**Credit Line:** Gift of David  
Weiss, through the Martin  
S. Ackerman Foundation

**Medium:** drypoint etching  
on paper

**Dimensions:** sheet: 20 1/2  
x 15 13/16 in. (52 x 40.1  
cm) plate: 6 1/8 x 6 1/8 in.  
(15.6 x 15.6 cm)

**Classification:** PRINTS

**Object number:** 79.63.12



**Primary Maker:** Ronald  
**B. Kitaj**

**Nationality:** American  
Robert Duncan

**Date:** 1971

**Credit Line:** Gift of  
Theodore W. Strauel,  
through the Martin S.  
Ackerman Foundation

**Medium:** drypoint etching  
on paper

**Dimensions:** sheet: 20 3/8  
x 15 9/16 in. (51.7 x 39.5  
cm) plate: 6 1/8 x 6 1/8 in.  
(15.5 x 15.5 cm)

**Classification:** PRINTS

**Object number:** 79.59.14