

Basic Report



Primary Maker:
Utagawa Toyokuni III
(Utagawa Kunisada)
Nationality: Japanese
The Actor Sawamura
Gennosuke in the role of
Otomo no Kuronushi
Date: c. 1810
Credit Line: Gift of John Day
Medium: color woodblock
print
Dimensions: 15 5/8 x 10 1
/4 in. (39.7 x 26 cm)
Classification: EASTERN
Object number: M.2019.4



Primary Maker:
Hiroshige
Nationality: Japanese
[A Woman in Blue in
Landscape]
Date: ca. 1843-46
Credit Line: Gift of Ivey St.
John
Medium: color woodblock
print
Dimensions: (sight): 9 1/2
x 7 in. (24.1 x 17.8 cm)
frame: 17 1/2 x 12 3/4 x 1
/2 in. (44.5 x 32.4 x 1.3 cm)
Classification: WCMA
Reserve Collection
Object number: RC.81.5



Primary Maker:
Hiroshige
Nationality: Japanese
Bijin-ga, Beauties-part of
the tryptych
Date: ca. 1847-48
Credit Line: Gift of Orson L.
St. John, Class of 1928 in
memory of Charles Francis
Gaskill, Class of 1928,
Talcott Miner Banks, Class
of 1928, Gordon Bailey
Washburn, Class of 1928,
John W.G. Tenney, Class of
1928 and Bronson Fargo,
Class of 1951
Medium: color woodblock
print
Dimensions: Overall: 13 x
17 1/4 in. (33 x 43.8 cm)
Classification: WCMA
Reserve Collection
Object number: RC.58.9



Primary Maker:

Toyohara Kunichika

Nationality: Japanese
Contemporary series of six flowers

Date: 1867

Credit Line: Bequest of
Mrs. Charles Prendergast

Medium: color woodblock
print

Dimensions: frame: 17 x
13 1/4 in. (43.2 x 33.7 cm)

Classification: EASTERN

Object number: 95.4.55



Primary Maker:

Hiroshige

Nationality: Japanese
Hiratsuka (from the series
"Fifty-three Stations of the
Tokaido (Tokaido gojusan
tsugi no uchi))

Date: 1841-42

Credit Line: Gift of Orson L.
St. John, Class of 1928 in
memory of Charles Francis
Gaskill, Class of 1928,
Talcott Miner Banks, Class
of 1928, Gordon Bailey
Washburn, Class of 1928,
John W.G. Tenney, Class of
1928 and Bronson Fargo,
Class of 1951

Medium: color woodblock
print

Classification: WCMA

Reserve Collection

Object number: RC.58.6



Primary Maker:

Hiroshige

Nationality: Japanese
Kameyama (from the series
"Fifty-three Stations of the
Tokaido (Tokaido gojusan
tsugi no uchi))

Date: 1831-34

Credit Line: Gift of Ivey St.
John

Medium: color woodblock
print

Dimensions: (sight): 8 1/2
x 12 3/8 in. (21.6 x 31.4
cm) frame: 12 1/4 x 17 1/2
x 1/2 in. (31.1 x 44.5 x 1.3
cm)

Classification: WCMA

Reserve Collection

Object number: RC.81.6



Primary Maker:
Hiroshige

Nationality: Japanese
Kanda Myojin, Keidai
Yukibare no Zu (Clear
Weather after snow at the
Kanda Myojin Shrine) (from
the series "Famous Places
in the Eastern Capital")

Date: ca. 1840-1842

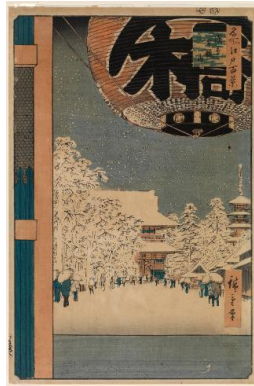
Credit Line: Gift of Orson L.
St. John, Class of 1928 in
memory of Charles Francis
Gaskill, Class of 1928,
Talcott Miner Banks, Class
of 1928, Gordon Bailey
Washburn, Class of 1928,
John W.G. Tenney, Class of
1928 and Bronson Fargo,
Class of 1951

Medium: color woodblock
print

Dimensions: Overall: 12 3
/4 x 17 3/4 in. (32.4 x 45.1
cm)

Classification: WCMA
Reserve Collection

Object number: RC.58.2



Primary Maker:
Hiroshige

Nationality: Japanese
Kinryuzan Temple at
Asakusa (Asakusa
Kinryuzan) (from the series
"One Hundred Famous
Views of Edo" (Meisho Edo
hyakkei))

Date: 1856

Credit Line: Gift of Ivey St.
John

Medium: color woodblock
print

Dimensions: (sight): 13 3/8
x 8 7/8 in. (34 x 22.5 cm)
frame: 20 3/8 x 15 3/4 x 3
/4 in. (51.8 x 40 x 1.9 cm)

Classification: WCMA
Reserve Collection

Object number: RC.81.2



Primary Maker:
Utagawa Toyokuni III
(Utagawa Kunisada)

Nationality: Japanese
Leaf from Album of
Dramatic Scenes

Date: probably late 18th
century

Credit Line: Gift of Arthur J.
Waterman, Class of 1928

Medium: color woodblock
print

Dimensions: Overall: 14 3
/16 x 9 1/4 x 1 in. (36 x
23.5 x 2.5 cm)

Classification: EASTERN

Object number: 78.31.13.B



Primary Maker:
Utagawa Toyokuni III
(Utagawa Kunisada)

Nationality: Japanese
Leaf from Album of
Dramatic Scenes

Date: probably late 18th
century

Credit Line: Gift of Arthur J.
Waterman, Class of 1928

Medium: color woodblock
print

Dimensions: Overall: 14 3
/16 x 9 1/4 x 1 in. (36 x
23.5 x 2.5 cm)

Classification: EASTERN

Object number: 78.31.13.C