

Basic Report



Primary Maker: Lu Shi-tao

Nationality: Chinese
Album of twelve bird and flower pictures

Date: 1623

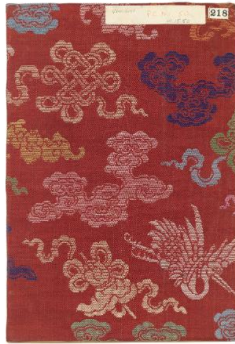
Credit Line: Selection from the Peterson Collection, Gift of William Bingham II

Medium: color on silk

Dimensions: Overall: 13 1/8 x 8 11/16 x 11/16 in. (33.3 x 22.1 x 1.8 cm)

Classification: EASTERN

Object number: 41.15.42



Primary Maker:
Anonymous (Chinese)

Nationality: Chinese

Album of twelve paintings
1. Two scholars examining a drawing of bamboo leaves

2. Cherry trees enveloped by mist
3. A woman on a terrace with bananas bathing her baby
boy
4. A cottage in the hills
5. A fisherman clad in a blue coat resting in his boat

Date: 19th century?

Credit Line: Selection from the Peterson Collection, Gift of William Bingham II

Medium: color on silk

Dimensions: Overall: 9 5/8 x 6 7/16 x 15/16 in. (24.5 x 16.4 x 2.4 cm)

Classification: EASTERN

Object number: 41.15.50



Primary Maker: Lu Chih

Nationality: Chinese
Autumn landscape with calligraphy

Date: no date

Credit Line: Selection from the Peterson Collection, Gift of William Bingham II

Medium: color on silk

Dimensions: 302 1/8 x 11 7/8 in. (767.4 x 30.2 cm)

Classification: EASTERN

Object number: 41.15.13



Primary Maker: Chou Jen-ho
Nationality: Chinese
 Flower still-life
Date: 1804?
Credit Line: Selection from the Peterson Collection, Gift of William Bingham II
Medium: color on silk
Dimensions: Overall: 41 9/16 x 20 1/16 in. (105.5 x 51 cm)
Classification: EASTERN
Object number: 41.15.14



Primary Maker: 'Ye T'ung
Nationality: Chinese
 Flower Still-Life
Date: Ming Dynasty
Credit Line: Selection from the Peterson Collection, Gift of William Bingham II
Medium: color on silk
Dimensions: frame: 57 1/2 x 21 1/8 in. (146 x 53.6 cm)
Classification: EASTERN
Object number: 41.15.16



Primary Maker: Anonymous (Chinese)
Nationality: Chinese
 Portrait of a heavenly fairy
Date: 17th-18th century
Credit Line: Selection from the Peterson Collection, Gift of William Bingham II
Medium: color on silk
Dimensions: frame: 34 7/16 x 21 7/16 in. (87.5 x 54.5 cm)
Classification: EASTERN
Object number: 41.15.39



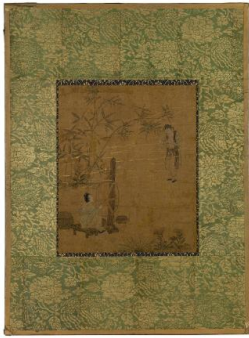
Primary Maker: Gai Qi
Nationality: Chinese
 Portraits of great scholars of the Tang Dynasty
Date: 1828
Credit Line: Selection from the Peterson Collection, Gift of William Bingham II
Medium: color on silk
Classification: EASTERN
Object number: 41.15.29



Primary Maker: After Chou Ch'ên
 Twelve portraits of national officials and heroes of the Ming Dynasty
Date: 19th century
Credit Line: Selection from the Peterson Collection, Gift of William Bingham II
Medium: color on silk
Dimensions: Overall: 11 1/2 x 7 3/16 x 13/16 in. (29.2 x 18.2 x 2 cm)
Classification: EASTERN
Object number: 41.15.45



Primary Maker: Anonymous (Chinese)
Nationality: Chinese
 Two sages accompanied by servants amid pine and Wu-tung trees
Date: 15th or 16th century
Credit Line: Selection from the Peterson Collection, Gift of William Bingham II
Medium: color on silk
Dimensions: Overall: 21 1/2 x 10 15/16 in. (54.6 x 27.8 cm)
Classification: EASTERN
Object number: 41.15.37



Primary Maker:
Anonymous (Chinese)
Nationality: Chinese
Untitled
Date: 13th century?
Credit Line: Gift of Mrs.
Walter S. Russel, 1932
Medium: color on silk
Dimensions: image: 10 15
/16 x 11 7/16 in. (27.8 x 29
cm) Overall: 21 9/16 x 16
in. (54.7 x 40.6 cm)
Classification: EASTERN
Object number: PC.62