

Basic Report



Primary Maker:
Elizabeth McLean-Smith
Nationality: American
Bust of Tyler Dennett
(1883-1949), Class of
1904, Ninth President of
Williams College 1934-1937
Date: c. 1954
Credit Line: Gift of The
Class of 1904
Medium: terracotta
Dimensions: Overall: 21 x
16 x 10 in. (53.3 x 40.6 x
25.4 cm)
Classification: SCULPTURE
Object number: 54.38



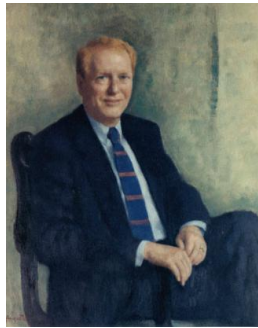
Primary Maker: Everett
Raymond Kinstler
Nationality: American
Carl W. Vogt, Class of
1958, Fifteenth President
of Williams College, 1999-
2000
Date: 2002
Credit Line: Commissioned
by the Trustees of Williams
College, 2002
Medium: oil on canvas
Dimensions: Overall: 42 x
38 in. (106.7 x 96.5 cm)
frame: 53 x 49 x 3 in.
(134.6 x 124.5 x 7.6 cm)
Classification: PAINTING
Object number: M.2002.9



Primary Maker:
**Attributed to Elizabeth
Maria Chadbourne**
Nationality: American
Dr. Paul Ansel Chadbourne
(1823-1883), 5th President
of Williams College
Date: ca. 19th century
Credit Line: Gift of John
Carleton Chadbourne in
memory of Elizabeth Maria
Chadbourn, Emma
Frances Chadbourne Wood
& Rev. Sumner Gilbert
Wood, Horace Winbourne
Wood & Beatrice Virginia
Dorman Wood
Medium: oil on canvas
Dimensions: frame: 39 x
34 x 3 5/8 in. (99.1 x 86.4
x 9.2 cm)
Classification: WCMA
Reserve Collection
Object number: RC.63

Primary Maker: Everett Raymond Kinstler

Nationality: American
Francis C. Oakley,
Thirteenth President of
Williams College 1985-
1993, Dean of Faculty
1977-84
Date: 1996
Credit Line: Commissioned
by the Trustees of Williams
College, 1996
Medium: oil on canvas
Dimensions: frame: 57 x
46 1/2 in. (144.8 x 118.1
cm)
Classification: PAINTING
Object number: 96.22



Primary Maker: George Augusta

Nationality: American
Harry C. Payne, Fourteenth
President of Williams
College, 1994-1999
Date: July 2000
Credit Line: Commissioned
by the Trustees of Williams
College, 2000
Medium: oil on canvas
Dimensions: Overall: 40 3
/16 x 31 7/8 in. (102 x 81
cm) frame: 47 1/4 x 39 3
/16 x 1 3/4 in. (120 x 99.5
x 4.4 cm)
Classification: PAINTING
Object number: M.2000.4



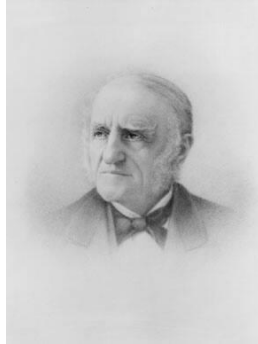
Primary Maker: Everett Raymond Kinstler

Nationality: American
John Wesley Chandler,
Twelfth President of
Williams College 1973-
1985, Williams College
Trustee 1969-73, Dean of
Faculty 1966-67, Provost
1965-66, Professor 1955-65
Date: 1987
Credit Line: Commissioned
by the Trustees of Williams
College
Medium: oil on canvas
Dimensions: image: 44 x
36 in. (111.8 x 91.4 cm)
frame: 54 x 46 in. (137.2 x
116.8 cm)
Classification: PAINTING
Object number: 94.1.67



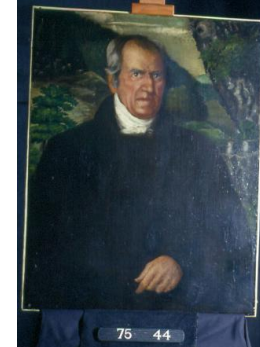
Primary Maker: H. Lee Hirsche

Nationality: American
L.H.B. in A.M.
Date: 1970
Credit Line: Bequest of
Lawrence H. Bloedel, Class
of 1923
Medium: acrylic on canvas
Dimensions: Overall: 48 1
/4 x 72 1/4 in. (122.5 x
183.5 cm)
Classification: PAINTING
Object number: 77.9.124



Primary Maker: Miss Whitman

Nationality: American
Mark Hopkins (1802-1887),
Class of 1824, Fourth
President of Williams
College 1836-1872,
College Trustee 1872-1887
Date: no date
Credit Line: Found in the
collection and catalogued,
1994
Medium: charcoal on paper
mounted to board
Dimensions: Overall: 27 3
/16 x 20 1/8 in. (69 x 51.1
cm) frame: 33 7/8 x 26 9
/16 in. (86 x 67.5 cm)
Classification: DRAWING
Object number: 94.1.5



Primary Maker: Anonymous (American)

Mark Hopkins (1802-1887),
Class of 1824, Fourth
President of Williams
College 1836-1872,
College Trustee 1872-1887
Date: no date
Credit Line: Gift of Mrs.
Ellis A. Turner
Medium: oil on canvas
Dimensions: Overall: 33 1
/8 x 26 1/16 in. (84.2 x
66.2 cm)
Classification: PAINTING
Object number: 75.44

**Primary Maker: Corwin
K. Linson**

Nationality: American
Mark Hopkins (1802-1887),
Class of 1824, Fourth
President of Williams
College 1836-1872,
College Trustee 1872-1887

Date: 1922

Credit Line: Found in the
collection and catalogued,
1994

Medium: oil on canvas

Dimensions: H: cm

Classification: PAINTING

Object number: 94.1.80