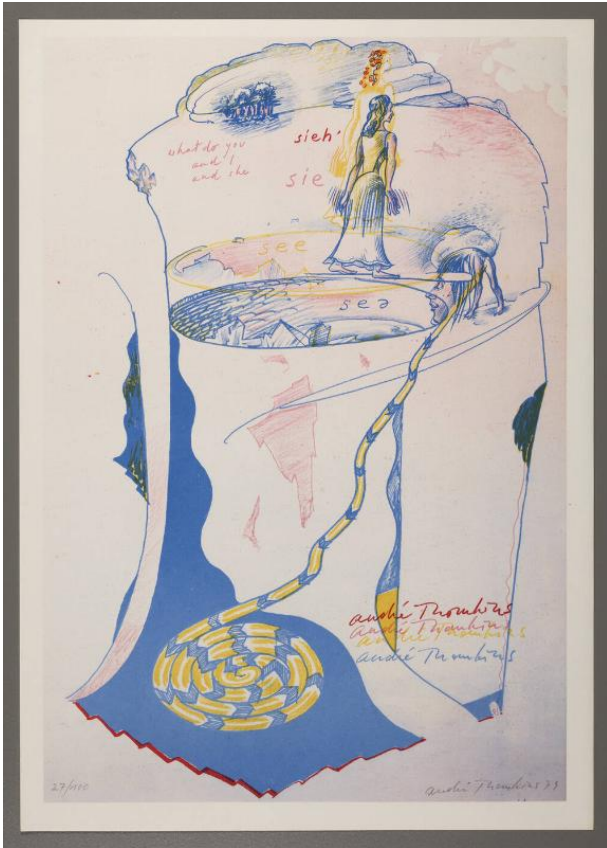


Basic Detail Report



What Do You and I and She (from "What Do You See?")

Date

1979

Primary Maker

André Thomkins

Medium

color print

Dimensions

image: 18 1/2 x 12 9/16 in. (47 x 31.9 cm) sheet: 19 5/8 x 13 13/16 in. (49.8 x 35.1 cm)