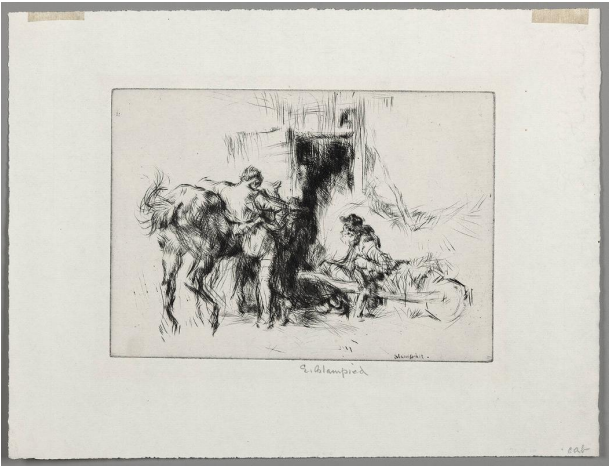


# Basic Detail Report

---



## Resting

**Date**

no date

**Primary Maker**

Edmund Blampied

**Medium**

drypoint on paper

**Dimensions**

sheet: 7 13/16 x 10 3/8 in. (19.9 x 26.4 cm) plate: 4 3/4 x 6 3/4 in. (12 x 17.1 cm)