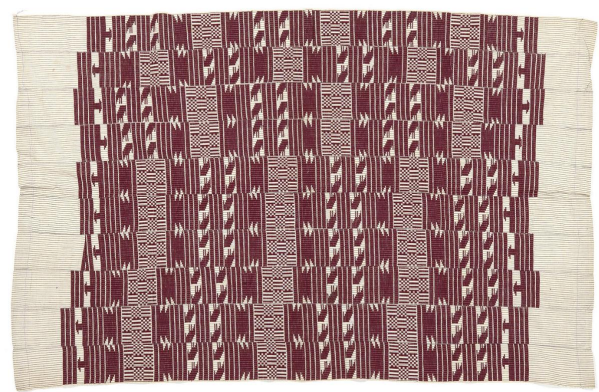


Basic Detail Report



Aso oke men's weave cloth (possibly mantle, wrapper or blanket)

Date

20th century

Primary Maker

Yoruba Cultural Group

Medium

cotton | rayon?

Description

maroon and white with blue pin stripe; float weave technique on cotton/rayon? Woven on double-heddle, narrow-band, horizontal treadle loom

Dimensions

Overall: 69 1/2 x 46 7/8 in. (176.5 x 119 cm)