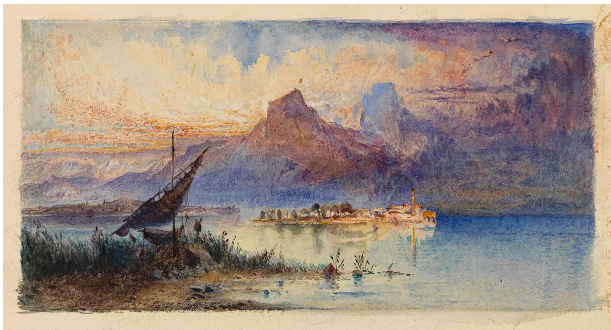


# Basic Detail Report

---



## Copy from Turner, directed by Ruskin

**Date**

no date

**Primary Maker**

Esther Francesca Alexander

**Medium**

watercolor on paper

**Dimensions**

sheet: 8 1/2 x 11 9/16 in. (21.6 x 29.4 cm) image: 3 1/4 x 6 7/16 in. (8.2 x 16.4 cm)