

Basic Report



Primary Maker: Sherrie Levine

Nationality: American
After Edgar Degas

Date: 1995

Credit Line: Gift of Hiram C. Butler, MA'79 in honor of Earl A. Powell, III, Class of '66

Medium: Duotone lithograph on paper

Dimensions: sheet: 26 x 21 in. (66 x 53.3 cm)
frame: 29 3/16 x 24 in. (74.1 x 61 cm)

Classification: PRINTS

Object number: M.2014.6.5



Primary Maker: Andy Warhol

Nationality: American
Any One for Shoes? (from "À la recherche du shoe perdu" with poems by Ralph Pomeroy)

Date: 1955

Credit Line: Gift of Richard F. Holmes, Class of 1946

Medium: hand colored off-set lithograph on paper

Dimensions: frame: 11 1/4 x 14 1/4 x 1 3/8 in. (28.6 x 36.2 x 3.5 cm)

Classification: PRINTS

Object number: M.2005.17.31.E



Primary Maker: Mabel Dwight

Nationality: American
Farmyard

Date: 1947

Credit Line: Gift of David P. Tunick, Class of 1966

Medium: lithograph on paper

Dimensions: sheet: 12 x 15 3/8 in. (30.5 x 39.1 cm)
image: 9 15/16 x 10 3/4 in. (25.2 x 27.3 cm)

Classification: PRINTS

Object number: 99.16.16



Primary Maker: Andy Warhol

Nationality: American
I Dream of Jeannie with the Light Brown Shoes (from "À la recherche du shoe perdu" with poems by Ralph Pomeroy)

Date: 1955

Credit Line: Gift of Richard F. Holmes, Class of 1946

Medium: hand colored off-set lithograph on paper

Dimensions: frame: 11 1/4 x 14 1/4 x 1 3/8 in. (28.6 x 36.2 x 3.5 cm)

Classification: PRINTS

Object number: M.2005.17.31.G



Primary Maker: Andy Warhol

Nationality: American
In Her Sweet Little Alice Blue Shoes (from "À la recherche du shoe perdu" with poems by Ralph Pomeroy)

Date: 1955

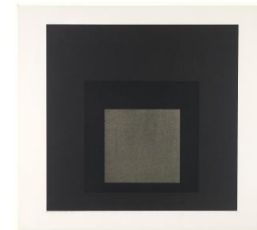
Credit Line: Gift of Richard F. Holmes, Class of 1946

Medium: hand colored off-set lithograph on paper

Dimensions: frame: 11 1/4 x 14 1/4 x 1 3/8 in. (28.6 x 36.2 x 3.5 cm)

Classification: PRINTS

Object number: M.2005.17.31.A



Primary Maker: Josef Albers

Nationality: American
Midnight + Noon III (from the portfolio "Midnight and Noon")

Date: 1964

Credit Line: Gift of Jim Dine

Medium: lithograph on paper

Dimensions: sheet: 19 x 20 9/16 in. (48.2 x 52.3 cm)
image: 15 3/4 x 15 13/16 in. (40 x 40.2 cm)

Classification: PRINTS

Object number: 77.52.3



Primary Maker: Kenjilo Nanao

Nationality: American
Night Flower III

Date: 1976

Credit Line: Gift of Kenjilo and Gail Nanao, parents of Max Nanao, Class of 1995

Medium: color lithograph on paper

Dimensions: Overall: 24 x 20 in. (61 x 50.8 cm)

Classification: PRINTS

Object number: 91.50.1



Primary Maker: June C. Wayne

Nationality: American
nos portraits en 2060 Ensor /Wayne (from "Artists' Impressions")

Date: c.1989-1991

Credit Line: Museum purchase, Kathryn Hurd Fund

Medium: color lithograph on paper

Dimensions: sheet: 12 1/16 x 12 1/16 in. (30.6 x 30.7 cm) image: 7 5/16 x 10 1/16 in. (18.5 x 25.5 cm)

Classification: PRINTS

Object number: 95.7.X



Primary Maker: Andy Warhol

Nationality: American
Shoe Fly Baby (from "À la recherche du shoe perdu" with poems by Ralph Pomeroy)

Date: 1955

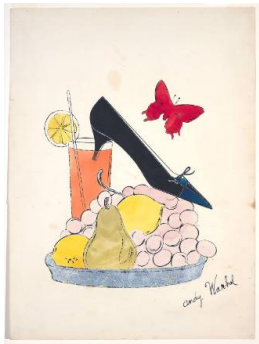
Credit Line: Gift of Richard F. Holmes, Class of 1946

Medium: hand colored off-set lithograph on paper

Dimensions: frame: 11 1/4 x 14 1/4 x 1 3/8 in. (28.6 x 36.2 x 3.5 cm)

Classification: PRINTS

Object number: M. 2005.17.31.C



Primary Maker: Andy Warhol

Nationality: American
Shoe in Ice Tea Glass with Butterfly

Date: 1954-1956

Credit Line: Gift of Richard F. Holmes, Class of 1946

Medium: hand colored lithograph on paper

Dimensions: Overall: 16 x 12 in. (40.6 x 30.5 cm)

Classification: PRINTS

Object number: M. 2005.17.19