

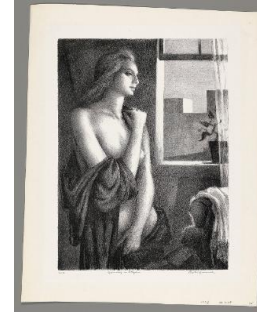
Basic Report



Primary Maker: Benton Murdoch Spruance
Nationality: American
Bluebell Hill
Date: 1932
Credit Line: Gift of Sigmund R. Balka, Class of 1956, and Elinor B. Balka
Medium: lithograph on paper
Dimensions: sheet (sight): 12 1/2 × 17 in. (31.8 × 43.2 cm)
Classification: WCMA Reserve Collection
Object number: RC.89.143



Primary Maker: Benton Murdoch Spruance
Nationality: American
The Homecoming
Date: 1935
Credit Line: Gift of Sigmund R. Balka, Class of 1956, and Elinor B. Balka
Medium: lithograph on paper
Dimensions: frame: 19 1/4 × 21 1/2 in. (48.9 × 54.6 cm) image: 9 × 13 3/4 in. (22.9 × 34.9 cm)
Classification: WCMA Reserve Collection
Object number: RC.89.163



Primary Maker: Benton Murdoch Spruance
Nationality: American
Morning in Babylon; City Morning
Date: 1938
Credit Line: Gift of Sigmund R. Balka, Class of 1956, and Elinor B. Balka
Medium: lithograph on paper
Dimensions: sheet: 16 3/4 × 13 1/2 in. (42.5 × 34.3 cm)
Classification: WCMA Reserve Collection
Object number: RC.89.171



Primary Maker: Benton Murdoch Spruance
Nationality: American
Second Front (Subway Shift)
Date: 1943
Credit Line: Gift of Sigmund R. Balka, Class of 1956, and Elinor B. Balka
Medium: lithograph on paper
Dimensions: sheet: 20 3/8 × 14 1/2 in. (51.8 × 36.8 cm)
Classification: WCMA Reserve Collection
Object number: RC.89.189



Primary Maker: Benton Murdoch Spruance
Nationality: American
Symbols of Grace
Date: 1937
Credit Line: Gift of Sigmund R. Balka, Class of 1956, and Elinor B. Balka
Medium: lithograph on paper
Dimensions: sheet: 13 × 16 3/4 in. (33 × 42.5 cm)
Classification: WCMA Reserve Collection
Object number: RC.89.191



Primary Maker: Benton Murdoch Spruance
Nationality: American
Untitled [Soldier and Chaplain]
Date: 1944
Credit Line: Gift of Sigmund R. Balka, Class of 1956, and Elinor B. Balka
Medium: lithograph on paper
Dimensions: sheet: 17 × 22 1/2 in. (43.2 × 57.2 cm)
Classification: WCMA Reserve Collection
Object number: RC.89.188